

University of San Diego

Digital USD

Alcalá View (University of San Diego. Public Relations Office)

USD News

1986

Alcalá View 1986 02.06

University of San Diego Publications and Human Resources offices

Follow this and additional works at: <https://digital.sandiego.edu/alcalaview-1985>

Digital USD Citation

University of San Diego Publications and Human Resources offices, "Alcalá View 1986 02.06" (1986). *Alcalá View (University of San Diego. Public Relations Office)*. 7. <https://digital.sandiego.edu/alcalaview-1985/7>

This Newsletter is brought to you for free and open access by the USD News at Digital USD. It has been accepted for inclusion in Alcalá View (University of San Diego. Public Relations Office) by an authorized administrator of Digital USD. For more information, please contact digital@sandiego.edu.

AlcaláView

UNIVERSITY OF SAN DIEGO

University of San Diego Archives

East campus building plans set

Plans are well under way for construction of a \$10.5 million student housing complex on the site of the Sports Center softball field.

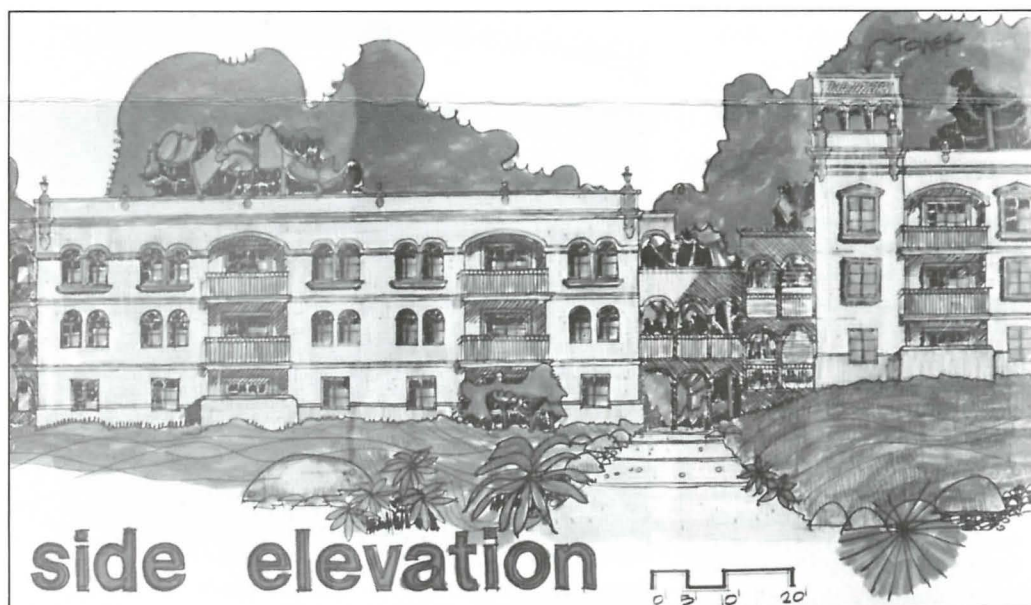
The new housing will be the first phase of a three-phase project designed to add student apartments, new recreational facilities and a child care center to the east campus near the Sports Center.

The San Diego architectural firm of Schoell and Paul, Inc. is completing working drawings for the proposed 154-unit student apartments, according to **Jack Boyce**, vice president for financial affairs.

Grading for the project is expected to begin in May or June. The apartments will be ready for occupancy by September 1987.

The project will be funded through the issuance of \$15 million of California Educational Facilities Authority (CEFA) tax exempt bonds, Boyce said. About \$3 million of the total will help pay for University Center construction.

Authorized by the state legislature, CEFA bonds are available to California



This is an artist's rendering of the new student apartments.

private universities to fund new facilities construction, renovation and the purchase of capital equipment.

The proposed housing is part of the University's long range plan for 1985-95. The document includes plans for facilities development throughout campus.

The demand for additional student housing has been clearly demonstrated, according to **Tom Burke**, vice president for students. Fall semester 156 students were housed in the off-campus Oakwood Apartments, continuing the

trend of recent years in which student demand for on-campus housing has exceeded supply. Burke expects that trend to continue.

"The demand justified more housing," said Burke, "so we have moved ahead with plans."

Three three-story buildings will be built. Each will consist of two wings of one- and two-bedroom apartments. All units will include a kitchen, dining area, living room with a balcony, and, in the two-bedroom units, two bathrooms and two bedrooms. All ground floor units will

be accessible to the handicapped.

The buildings will incorporate the Spanish Renaissance architectural style featuring arches, columns and wrought iron prevalent throughout campus. **John Zeterberg**, director of physical plant, said plans call for the buildings to be clustered around a courtyard.

The housing will be a mix of undergraduate and graduate students, with the exact breakdown to be determined at a later date, Burke noted. One of the buildings will contain (Please see next page)

Building

(From page one)

space for support services such as mailboxes, laundry, conference and study rooms, and housing staff offices.

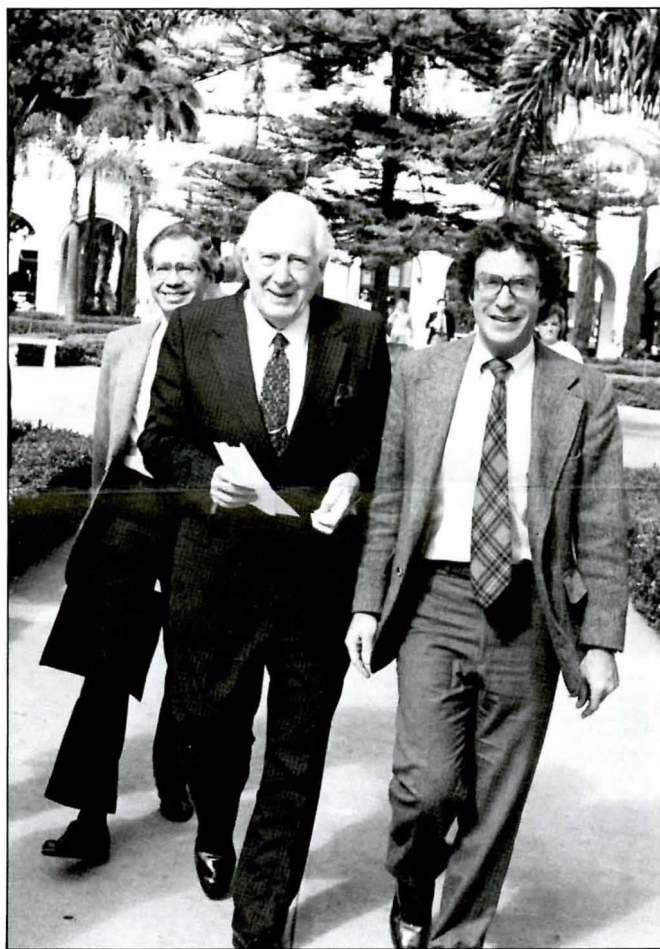
In conjunction with the construction of the new housing, the vehicular entrance to the Sports Center off of Linda Vista Road will be closed. Vehicular traffic will enter the area from Via La Cumbres Street.

To replace the current softball field, Zeterberg said a new field would be created north of the Sports Center and the existing intercollegiate baseball field. Construction of the field and replacement of the existing tennis courts will occur simultaneously with initial work on the housing. That work will complete phase one of construction.

Phase two of development—construction of another softball field, a track and a soccer field—will commence when additional funds are available. Phase three—construction of a child care center—will follow the recreational facilities.

USD has worked closely with representatives from the Linda Vista Community Council, the University Canyon Homeowners Association, the Tecolote Canyon Citizens Advisory Committee and the city planning office in an attempt to meet the concerns of residents living near the Sports Center, Zeterberg said.

"We have attempted to be responsive to the various citizens' groups," he said. He noted that construction plans were revised to preserve residents' desires for an unobstructed "view corridor" into Tecolote Canyon. ■



Supreme Court Chief Justice **Warren Burger** and School of Law Dean **Sheldon Krantz** head for a question and answer session with law students following a public meeting of the Commission on the Bicentennial of the United States Constitution. The two men are followed by **Bernard Siegan**, USD law professor, who also is a member of the Bicentennial Commission.

Burger praises campus

USD and its employees who helped roll out the red carpet for the February 2-3 meeting here of the Commission on the Bicentennial of the United States Constitution received praise from none other than the Chief Justice of the Supreme Court—**Warren Burger**.

Burger, who chairs the commission, said following the meetings that the Commission sessions held on campus were the best planned, best organized and at the most beautiful setting of any of the Commission's assemblies.

The Commission was established by Congress to promote and coordinate activities to commemorate the bicentennial of the framing of the Constitution in 1787.

During its campus visit, the Commission con-

ducted an open hearing in Camino Theatre attended by nearly 700. Commissioners heard testimony from various civic groups planning bicentennial activities.

Among those testifying was **USD President Author E. Hughes**, who called the Commission's attention to the Project for Public and Community Service. The project is an attempt by a group of college and university presidents nationwide to stimulate campus interest in public service.

New staff, promotions

Welcome to the following new staff employees who recently joined the USD community:

Joseph Batok, clerical assistant, Registrar; **Cheryl Church**, secretary, Development; **Greg Andrews**, secretary, Human Resources; **Roxanne Kruse**, clerical assistant, Communications; **Eileen VanTassell**, phone operator, Communications; **LaDeane Rosenzweig**, clerical assistant, Controller; **Lori Reisinger**, administrative assistant, Test Preparation; **Charles Smith**, gardener, Physical Plant; **Janet Finney**, secretary, Provost; **Rose-line Graves**, secretary, Arts & Sciences; **Leslie Barnsley**, secretary, Admissions; **Carol Morrow**, data entry clerk, Management Services; **Alonzo Napier**, patrol officer, Security.

Congratulations to the following staff employees who recently received promotions:

Dennis Hatch, from maintenance mechanic I to maintenance mechanic II, Physical Plant; **James Mathie**, patrol officer I to patrol officer II, Security; **Thanh Tran**, pool maintenance specialist to fleet mechanic, Physical Plant; **Ricky Draper**, special services worker to pool maintenance specialist, Physical Plant. ■



Top USD and construction officials toast completion of steel work on the University Center January 17. Left to right **Herman Koppf**, vice president of Artimex Iron, the company which did the steel work; **Dr. Author E. Hughes**, USD President; **A. Eugene Trepte**, chairman and chief executive officer of Trepte Construction Co., Inc.; **Roy Drew**, the center's architect; **Jack Boyce**, USD vice president for financial affairs; **Tom Cosgrove**, associate dean, Student Affairs; and **Therese Whitcomb**, professor of art.

Fasten those seat belts

Every week in the United States, about 900 people are killed in motor vehicle accidents. Each day, another 10,000 are injured on our streets and highways.

Those are just a couple of reasons for the new California seat belt law that took effect January 1. The law requires all drivers, as well as passengers over the age of four, to wear seat belts.

Violators of the new law face fines of up to \$20 for a first offense and a \$50 maximum fine on subsequent offenses.

USD employees should remember to wear seat belts when driving University vehicles, according to **Calista Davis**, Human Resources coordinator of employment and training.

In an effort to encourage seat belt use among University employees, USD sponsored a seat belt awareness campaign on campus during the month of February.

Gaye Soroka, special projects coordinator for Student Affairs, promoted a campaign which gave employees who signed up an opportunity to win \$25 in a drawing if they pledged to wear seat belts spring semester. More than 250 employees accepted the challenge.

The first two winners of \$25 were **Dave Navarro**, DeSales Hall resident director, and **Karen Reed**, Student Affairs secretary.

On February 27, teams of employees competed in a buckle up challenge to see which team could be the fastest to buckle up. (Results unavailable at press time.) On April 18, there will be a similar competition on campus among students from USD, San

Diego State and UCSD.

The buckle up campaign was funded by a grant from Metropolitan Life to the three institutions, Soroka said. ■

Seat belt myths

Auto safety experts agree that the use of seat belts can contribute to a reduction in the severity of vehicular accidents. Some people who decline to buckle up cite one or more of the following myths about the use of seat belts:

Myth: If I don't wear a seat belt, I might be saved if I'm thrown clear of the car.

Highly unlikely. The probability of a fatal accident is almost five times greater when the motorist is thrown from the car. The

forces in a collision can fling an ejected person as far as 150 feet.

Myth: A driver doesn't need a safety belt when traveling at a low speed or on a short trip.

All driving is potentially dangerous. More than half the accidents causing injury or death occur at speeds of less than 40 mph. Fatalities involving non-belted occupants have been recorded as low as 12 mph. Three out of four accidents causing death occur within 25 miles of home.

Myth: A lap belt eliminates the need for a shoulder belt.

Together, the lap belt and shoulder belt offer the best possible protection. A shoulder belt can prevent the head and chest from striking the steering wheel, dash and windshield. The lap belt will protect a driver from serious injury.

Myth: A safety belt will trap the driver in a burning or submerged car.

Less than one half of one percent of all injury-producing collisions involve fire or submersion. However, even in these cases, a person is far better off wearing a safety belt. The motorist is more likely to be unhurt, alert and capable of escaping quickly. Without a belt, the motorist might be stunned or knocked unconscious by the crash. ■

Dining hours

Campus Food Service has extended the lunch service hours of the Faculty/Staff dining room in DeSales Hall until 1:45 p.m. daily on a trial basis this semester. In the past the dining room closed at 1:15 p.m. ■

Coming Up

MARCH

1-21 "A Sniper Story."

George Azar photo essay chronicling events in lives of young snipers in Chiya neighborhood of West Beirut. Noon-5 p.m. weekdays, Founders Gallery. 260-4600, ext. 4261.

2, 9, 16 "The Passion Stories in the Four Gospels."

Institute for Christian Ministries Lenten series. 7 p.m.. Salomon Lecture Hall, DeSales Hall. Fee. 260-4784.

7 Women's basketball vs.

United States International University. 7:30 p.m.. Sports Center. 260-4803.

16 "By Your Cross and Resurrection You Have Set Us Free."

Institute for Christian Ministries lecture. 10 a.m.. Salomon Lecture Hall, DeSales Hall. Fee. 260-4784.

USD Orchestra concert celebrating 50th anniversary of the House of Czechoslovakia at Balboa Park. Features works of Czech composers Smetana, Dworak, Janacek and Friml. 2:30 p.m.. Camino Theatre. Admission charge. 260-4600 ext. 4427.

18 Dedication of Anne Swanke Memorial Rose Garden.

3:30 p.m.. east patio, Founders Hall. 260-4724.

Ray Bradbury, science fiction writer, speaks on the future. 8 p.m.. Camino Theatre. 260-4802.



Employees wrap Christmas presents collected during USD's Fourth Annual Food-Clothing-Toy Drive for the University's Linda Vista neighbors. Wrapping presents, left to right, are **Sera Schmitt**, assistant director of Public Relations; **Fr. Ron Pachence**, director of the Institute for Christian Ministries; **Kathryn Waller**, assistant director of Continuing Education; and **Libby Stroube**, director of development and alumni relations for the Law School.

Garden to honor Swanke

A newly-constructed rose garden near the east Founders Hall patio will be dedicated to former student **Anne Swanke** during an outdoor ceremony at the patio beginning at 3:30 p.m. March 18.

The circular garden is planted with Floribunda red rose bushes—Swanke's

favorite flower. The roses will honor the memory of the talented and well-liked student who was just weeks away from completing her senior year of classes when she was murdered in November 1984.

Tentative plans for the ceremony include remarks by **Dr. Joseph Pusateri**, dean of the College of Arts and Sciences, and a blessing of the garden by **Fr. Michael McKay**, director of Campus Ministry. Members of Zeta Tau Alpha, Swanke's former sorority, will sing. ■

Knott's tickets

Knott's Berry Farm is offering special discounted ticket prices to USD employees during "March Whimsical Weekends." Tickets are only \$9 per person—a savings of \$4.95 off the usual price. They are good any weekend in March.

Just drop by Human Resources in DeSales, Room 100 to pick up your certificate, which is good for purchasing up to ten tickets at the reduced price. ■



Publications Office
DeSales Hall
Room 274