

University of San Diego

## Digital USD

---

USD Update

USD News

---

1-1-1985

### USD Update Winter 1985 volume 6 number 2

University of San Diego Publications Office

Follow this and additional works at: <https://digital.sandiego.edu/usd-update>

---

#### Digital USD Citation

University of San Diego Publications Office, "USD Update Winter 1985 volume 6 number 2" (1985). *USD Update*. 18.

<https://digital.sandiego.edu/usd-update/18>

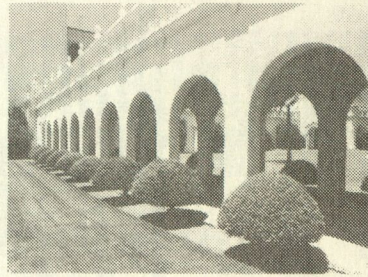
This News Article is brought to you for free and open access by the USD News at Digital USD. It has been accepted for inclusion in USD Update by an authorized administrator of Digital USD. For more information, please contact [digital@sandiego.edu](mailto:digital@sandiego.edu).



## USD invites you to Alcalá Park . . .

- Camino Theatre performances
- Founders Gallery art exhibitions
- public lectures and seminars
- intercollegiate athletic events
- Founders Chapel Masses
- continuing education classes
- and much more . . .

For information,  
call 619/260-4600  
Sports Information,  
Ext. 4272  
Public Relations,  
Ext. 4296  
Continuing Education,  
Ext. 4585



The University of San Diego does not discriminate on the basis of race, gender, color, religion, age, national origin, or handicap in its policies and programs.

# calendar

## January

**15** Reception in Phoenix for alumni, parents and friends.

**16** Reception in Las Vegas for alumni, parents and friends.

**17** Reception in Denver for alumni, parents and friends.

**19** Claude Bonheret, French Cultural Attache, Los Angeles, to speak on Ravel. Sponsored by the Alliance Francaise. 2 p.m., Manchester Auditorium. Non-member donation \$5. Call 260-4600, ext. 4441.

**19&20** "On Campus" television show features USD faculty in program on Alcohol Awareness and El Salvador. 5 p.m., Sat., 10:30 a.m., Sun. KCET Channel 28.

**24** Open House. Phillip Y. Hahn School of Nursing.

**26** President's Club Dinner.

**28** Classes begin.

**30** Corporate Associates luncheon. For information, call James Sotiros, director of corporate and foundation relations, 260-4600, ext. 4724.

## February

**4** Reception in Orange County for alumni, parents and friends.

Emerging Issues Forum: Bishops' Pastoral Letter on Catholic Social Teaching and U.S. Economy. Topic to be

announced. 7:30 p.m., Manchester Center.

SDSU/USD CPA Review for exam May, 1985. Course offered on Saturdays or Monday and Wednesday evenings. For information, call 260-4585.

**8** Business UPDATE Breakfast Seminars, 10 lectures on business topics of current interest. 7:30 a.m., continental breakfast followed by seminar, 8 a.m. to 9 a.m. Manchester Conference Center. \$15 each seminar or \$135 for 10-session series. Call Kathy Hare, 260-4585. "How to Make Japanese Management Theory Work for You," Dr. Ellen Cook.

**12** Reception in Orange County for USD alumni, parents and friends.

**15** Business UPDATE Breakfast Series. "Excellence; Culture; Renaissance: Buzz Words—Are they the Key to the Future?"

**16** "Horse Feathers." An American Indian satire, Bill Van Flores. Opening reception 7-9 p.m., Feb. 17. Founders Gallery. Gallery hours: noon - 5 p.m., weekdays. Through March 30, Call 260-4600.

Poetry and narration by French artist Eric Chartier. Sponsored by Alliance Francaise. 2 p.m., Manchester Auditorium. Non-member donation, \$5. Call 260-4600, ext. 4441.

**19** Reception in San Diego for USD alumni, parents and friends.

Mardi Gras celebration. 11:15 a.m. - 12:30 p.m., French Parlor. Sponsored by the French Club.

**19-20** Blood Drive sponsored by Biology Club and Student Affairs. 9 a.m. - 2 p.m., Salomon Lecture Hall.

**20** Ash Wednesday.

**21** Reception in Orange County for USD alumni, parents and friends.

**22** Business UPDATE Breakfast Series. "No Shows that Wasted Time, Wasted Money."

**26** Social commentator Michael Novak addresses the Bishops' Pastoral on Catholic Social Teaching and the U.S. Economy. 8 p.m., Camino Theater.

**27** Reception in San Francisco for USD alumni, parents and friends.

**28** Reception in Menlo Park for USD alumni, parents and friends.

## March

**1** Distinguished Speakers Series. Speaker, Lee Grissom, president of the Greater San Diego Chamber of Commerce, "Present and Future Economic Outlook for San Diego." 7:30 a.m., continental breakfast, speaker at 8 a.m. Registration

\$15 Call 260-4585.

**4** USD Auxiliary luncheon. Call Sr. Virginia McMonagle, 260-4600.

Emerging Issues Forum: Bishops' Pastoral Letter on Catholic Social Teaching and the U.S. Economy. Topic to be announced. 7:30 p.m. Manchester Conference Center.

**5** Reception in Los Angeles for USD alumni, parents and friends.

**8** USD Board of Trustees meeting on campus.

Business UPDATE Breakfast Series. "Consultant's Shopping Guide."

**15** Spring holiday.

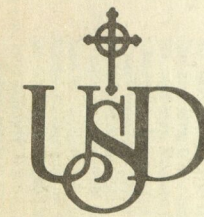
Business UPDATE Breakfast Series. "Mergers in the Public Accounting Profession."

**22** Business UPDATE Breakfast Series. "In Search of Managerial Excellence."

**23** National Ballet Academy of San Diego Repertory Performance. 8 p.m., Camino Theater. General admission, \$5; students, \$4. Call 260-4802.

**28-29** Tenth anniversary Philip Y. Hahn School of Nursing Conference and events. Call Dr. Janet Harrison, 260-4564.

**30** Last day of classes before Easter holiday.



University of San Diego

# update

Winter 1985  
Vol. 6, No. 2



## Harmon, Olin halls dedicated for USD schools of education, business

### Inside

- Scholarship established for slain student — page 2
- Homecoming photos — page 3
- 1983-84 Annual Report Honor Roll of Donors — page 5

USD University of San Diego  
Public Relations Office  
Alcalá Park  
San Diego, CA 92110

INTER-CAMPUS  
RAYMOND S. BRANDES  
HISTORY

Non-Profit Org.  
U.S. Postage  
PAID  
San Diego, CA  
Permit No. 365

— Address correction requested — Return postage guaranteed —



## Shumway to head Corporate Associates



Forrest Shumway

Forrest N. Shumway, board chairman and chief executive officer of the Signal Companies, Inc., will chair USD's Corporate Associates program for 1985. Corporate Associates is made up of corporate representatives who support the University's fund-raising activities.

Shumway succeeds Kim Fletcher, USD trustee and chairman and chief executive officer of Home Federal Savings and Loan, as head of Corporate Associates.

"Independent universities like USD are important to their communities, and to the nation as a whole," Shumway said. "They are centers of excellence, producing well-rounded alumni who often become our most valued citizens. USD brings the great tradition of American higher independent education to San Diego, and I look forward to my chairmanship of the Corporate Associates as a chance to help the University of San Diego reach its full potential."

Shumway is a member of the board of directors of Aluminum Company of America, First Interstate Bank Corp., and TransAmerica Corporation. He is also a member of the board of trustees of the University of Southern California; the board of visitors, University of California, Los Angeles, Graduate School of Management; the Hoover Institute, Stanford University; the board of overseers, University of California, San Diego; and the board of trustees of Scripps Clinic and Research Foundation.

Shumway is a native of Skowhegan, Maine. He earned bachelor and law degrees at Stanford University, and is a member of the California State Bar Association.

## Computer camps for youngsters in July, August

A computer camp for girls and boys between the ages of 9-15 will be held on campus next summer.

Two two-week sessions are planned: July 7-19 and July 21-August 2. Introductory, intermediate and advanced classes will be conducted. On campus housing and a full range of recreational activities will also be provided.

For more information, call (619) 260-4586 or write University of San Diego, Computer Camp, Continuing Education, Alcalá Park, San Diego, CA 92110.

## Scholarship fund to honor Swanke

Anne C. Swanke was just weeks away from completing her senior year of classes. A French and music major, she was an outstanding student, compiling a 3.7 grade point average. After graduation, she intended to pursue a career as an opera singer.

Then fate intervened. At 2 a.m. on November 20, Swanke was returning to her parents' home in San Carlos, east of San Diego, when she apparently ran out of gas in La Mesa. She was last seen carrying a can of gasoline towards her car. Four days later, police found her body in a remote area of Spring Valley.

Her death sparked a strong reaction both on campus and in San Diego. Contributions to a reward fund established to help police solve the case reached more than \$25,000. Hundreds of people called police offering information. The campus community filled Founders Chapel for a memorial Mass. And an Anne C. Swanke music scholarship memorial fund was established at USD.

Swanke's father, John Swanke, a member of the USD philosophy department since 1968, as well as his wife and five other children, were stunned and saddened by Anne's death. In a statement he wrote for the media, John Swanke

expressed "great sadness" at his daughter's death, but added, "Anne has peace now, and for that we are glad. The deep grief which my family, myself and my friends have now will heal. We will continue to live and to remember the beauty of that person who is Anne."

Swanke urged those who wish to memorialize his daughter to make a contribution to the scholarship fund.

Anne Swanke was a member of Zeta Tau Alpha sorority. She was listed in the 1983 Who's Who in American Colleges and Universities. She starred in the fall production of the Verdi opera "An Elxir of Love" at USD and had performed in past campus musicals.

Swanke's voice teacher, Robert Austin, a lecturer in music, described his pupil of six years as a "great student, one of the most sincere young women I've ever known."

"She was always optimistic in her feelings about other people," remembered Dr. Marjorie Hart, professor of music, who taught Swanke in several classes. "She was also one of the most responsible students we've ever had."

Donations to the memorial scholarship fund may be addressed to the Anne Swanke Memorial Fund,

c/o Sara Finn, Office of Public Relations, University of San Diego, San Diego, CA 92110.

## Honors faculty set Swanke Award

The Honors Program faculty have established the Anne C. Swanke Award to honor the slain USD student. The Swanke Award will be presented each spring to the outstanding graduating senior in the University's Honors Program.

"Anne Swanke was an outstanding student in USD's Honors Program," said Dr. C. Joseph Pusateri, dean of the College of Arts and Sciences. "This award will not only commemorate Anne, but it will also recognize future outstanding students in the Honors Program."

The Swanke Award recipient will be selected by a faculty committee from the Honors Program. The selection will be based upon academic achievement and service to the Honors Program and the University. The first Swanke Award recipient will be announced at USD's annual Honors Convocation, held each May.

## CLASS NOTES

### 1961

**Gary Hurteau** owns a printing business in Washington. He is married and has two daughters. One is a sophomore at Washington State University and the other is thinking about studying at the University of Mexico.

### 1965

**Dr. Tica (Doyle) Eastman** and her husband, Dr. Brent Eastman, are the proud parents of a baby girl, Alexandra Brent Eastman.

### 1968

**Dennis and Chris '64 Dunne** are the new parents of Brendan Christopher, born November 7. He is their fifth son.

### 1970

**James Hutton** is in research at Lockheed. He was remarried to Rose Mary Halperin in August. They have three daughters.

### 1975

**C. Samuel Marasco** has announced the establishment of Hahn, Marasco and Associates in Encinitas, Calif. . . . **Rita Wray** was married to Richard Berry in June, 1983.

### 1978

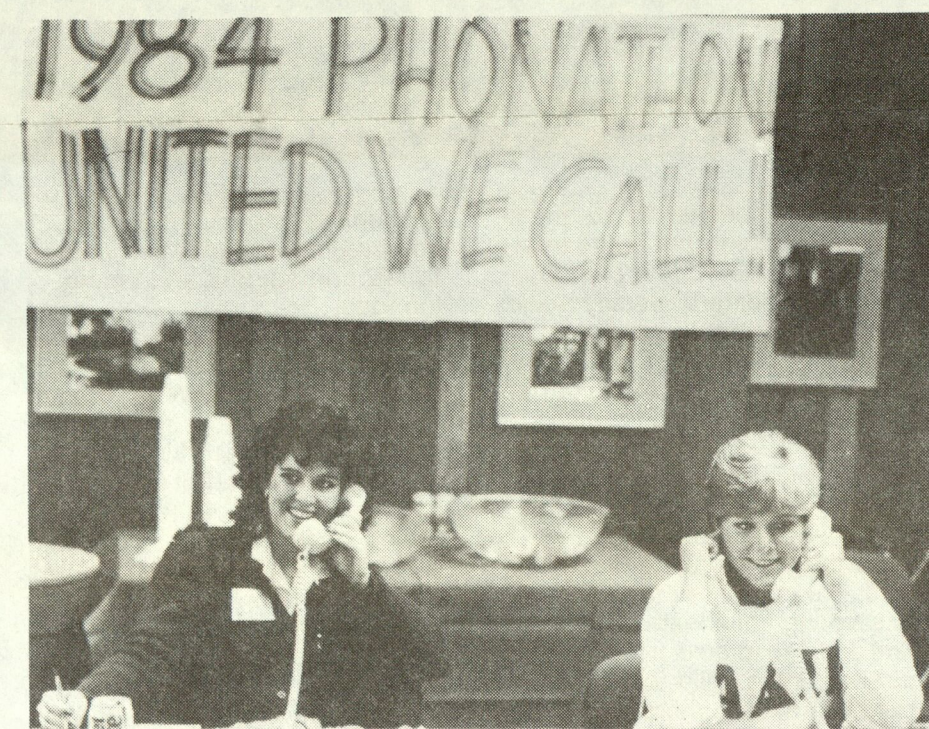
**David Newlon** is currently director of financial reporting at Twentieth Century-Fox Film Corporation. . . . **Martin F. Keil, Jr.** (law '84) passed the Arizona state bar exam in October. He is practicing law with his father (Kiel and Kiel) in Glendale, Ariz. He and his wife, Julie, live in Phoenix.

### 1980

**Mr. and Mrs. Michael Boblit** are the new parents of a son, Christopher Michael, born November 6.

### 1981

**Richard Tomczik** (MBA) recently was appointed controller of the Winchell's Division of Denny's, Inc. Tomczik has been with Denny's, Inc. since 1982, where he previously was manager of operational audit. Tomczik, his wife and their three children live in Mission Viejo, Calif.



## Volunteers call for USD

These two sorority members were among the dozens of USD students who called alumni and parents of students on behalf of the University's Annual Fund during fall semester. The fund is used to maintain the quality of a USD education. Callers reminded their listeners that this is the last year of the Irvine Foundation challenge — a challenge that increases the value of donor gifts. Alumni volunteer callers are needed for phonathons scheduled for February 5, 6, 20, 21 and March 5, 6, 26 and 27. For more information, call Kate Walden, assistant director of development, 260-4600.

## Harris verifying info for Alumni Directory

The Harris Publishing Company has begun phoning alumni to verify information for the new Alumni Directory scheduled for release in early summer, 1985. At the same time, company representatives also will invite alumni to order personal copies of the directory.

The telephone call is a follow-up to the two questionnaire card mailings sent to all alumni with verified addresses.

Harris Publishing has contracted

to produce the directories at virtually no cost to USD. Production of the directories will be financed solely through the sale of individual directory copies.

The directory will provide a complete listing of all living alumni with current addresses. A biographical sketch on each alumnus or alumna including name, class year, degree, residence address and phone number, and business or professional information where available, will be printed.

## Reliving the "good old days"

More than 300 alumni — representing the Classes of 1959, 1960, 1964, 1965, 1969, 1970, 1974, 1975, 1979 and 1980 — returned to USD November 2-4 for a weekend of activities and reminiscing with classmates.

The weekend began with an evening reception, and continued the next day with an official welcome from the University administration, campus tours, a barbecue, and the USD-Azusa Pacific football game (Azusa Pacific won 24-10). The day was capped with a dinner and outdoor dance. Finally, alumni gathered on Sunday in Founders Chapel for Mass to end their weekend together.

Throughout the festivities, alums expressed appreciation for the opportunity to gather and share memories. Tom Martz, director of alumni relations, said he was pleased with the weekend, and credited much of Homecoming's success to the 65 alumni reunion planning committee members.



An outdoor dance followed Saturday's dinner.



Alumni from Classes of 1979-80 line up for Saturday's dinner.

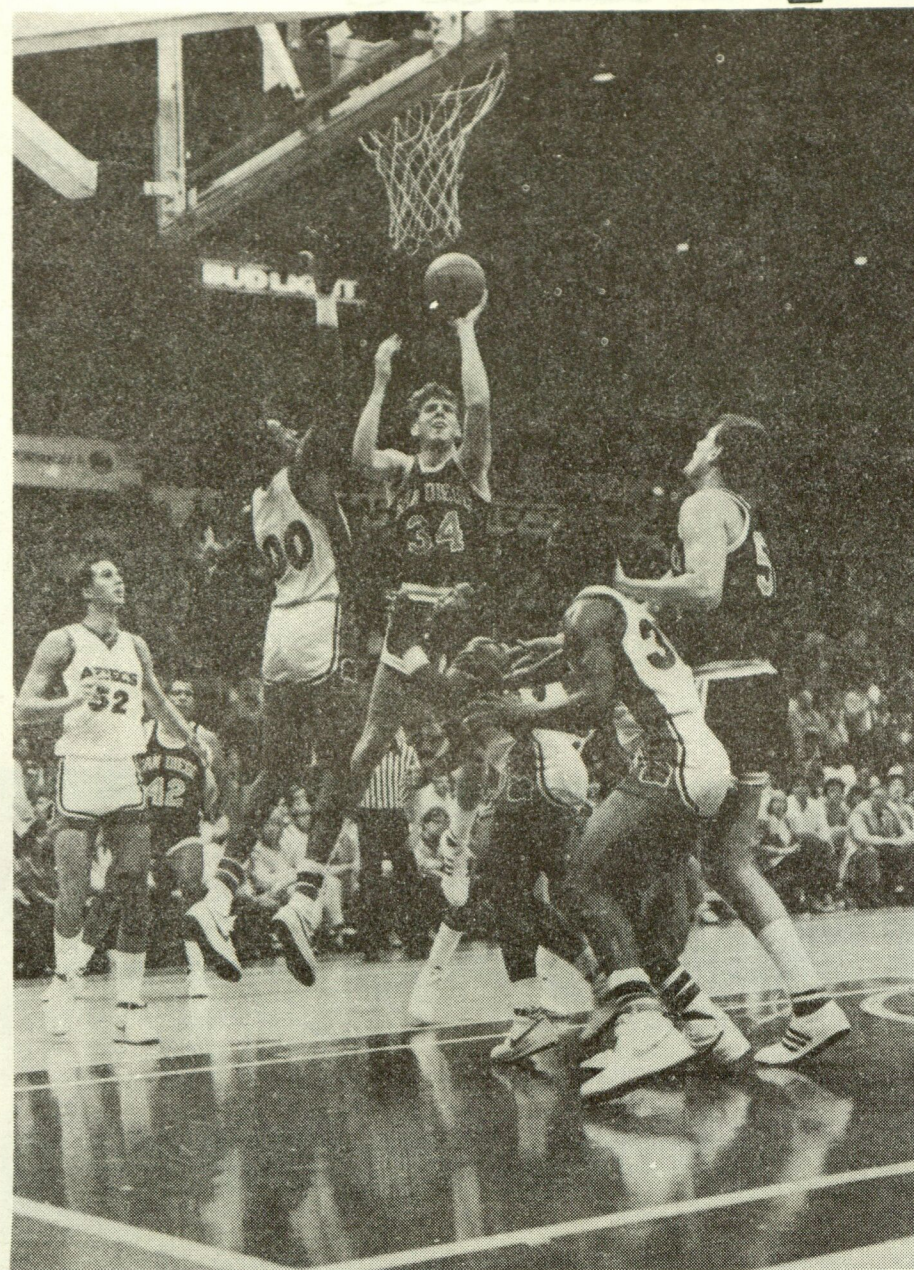


The action on the football field didn't bring smiles to the faces of many alumni.



Campus tours were a popular part of the weekend activities.





## Egan sees ingredients for "a very good team"

Hank Egan is in the midst of his first year as head coach of the USD men's basketball team. Egan coached at the United States Air Force Academy in Colorado Springs for the past 18 years, the last 13 as head coach. He posted a 148-185 record during his Falcon years.

The following is a short interview with the Torero head man.

**Are there any major differences between coaching here and at Air Force?**

At the Academy, I was always thinking that it must be a lot different than other places. The reality is that USD is a lot more similar than dissimilar. We want to recruit with essentially the same values; athletes who belong here, who will be successful academically and who will represent the school well. That's one of the reasons I feel very much at ease. I've got an atmosphere where the perspective is correct.

**Is there any pressure in taking over a program that was so successful the year before?**

I've inherited Jim Brovelli's system, players and schedule. If we don't win, blame it on him. Seriously though, I took this job with the idea they had a good thing going here. Jim did a great

job. We'll only try to improve on what he accomplished. As far as pressure, the only pressure I feel is the pressure I put on myself as a coach to try and win every game.

**What's your outlook on this year's team?**

There are all the ingredients for a very good team... size, quickness and shooting. What is needed is to establish the sense of pace that is best for this club. The quality of the people who make up this program is undoubtedly our most valuable asset. We look forward to a tremendous season.

**How important is winning to you?**

I want that a lot. However, winning is important only if it's done in the right way. The really hard thing in sports today is that succeeding seems to mean taking the Final Four, and earning big money. Whatever happened to competition, honest effort, trying to reach your potential as worthy goals? All the emphasis on money as being representative of success creates pressure to do something wrong, or illegal, to attain it. If that's what it takes to be winner, I just wouldn't do it.

## Upcoming Schedule Winter

DATE	SPORT	OPPONENT	SITE	TIME
Jan. 19	M. Basketball	Pepperdine	USD	7:30 p.m.
	W. Basketball	Loyola Marymount	LMU	4 p.m.
20	M. Tennis	U.C. Riverside	USD	1 p.m.
21	W. Swimming	Mills College	USD	9 a.m.
22	W. Basketball	Pt. Loma	USD	7:30 p.m.
24	M. Basketball	Gonzaga	G.U.	7:30 p.m.
	M. Tennis	UCSD	USD	1:30 p.m.
24-26	W. Swimming	Rebel Classic	UNLV	TBA
26	M. Basketball	Portland	Port.	7:30 p.m.
	W. Basketball	Loyola Marymount	USD	7:30 p.m.
27	M. Tennis	U.C. Santa Barbara	USD	12 p.m.
	W. Basketball	U.C. Irvine	USD	7:30 p.m.
31	M. Tennis	USIU	USD	1:30 p.m.
	M. Basketball	St. Mary's	USD	1:30 p.m.
Feb. 1	W. Tennis	USIU	USD	1:30 p.m.
	M. Tennis	C.S. Fullerton	USD	1:30 p.m.
	W. Basketball	USIU	USD	7:30 p.m.
2	M. Basketball	Santa Clara	USD	7:30 p.m.
	W. Swimming	Occidental	USD	12 p.m.
	M. Tennis	U.C. Irvine	UCI	1:30 p.m.
4	M. Baseball	Alumni Game	USD	1:30 p.m.
	M. Baseball	Pt. Loma	PLC	2:30 p.m.
	W. Tennis	UCLA	UCLA	1:30 p.m.
5	M. Tennis	C.S. Long Beach	USD	1:30 p.m.
6	M. Tennis	Grossmont J.C.	Grossmont	2 p.m.
	W. Tennis	U.C. Irvine	UCI	1:30 p.m.
7	M. Baseball	Arizona	U.A.	2 p.m.
8	M. Baseball	Arizona	U.A.	2 p.m.
	M. Basketball	Loyola Marymount	LMU	7:30 p.m.
	W. Basketball	U.C. Santa Barbara	UCSB	7:30 p.m.
	W. Swimming	Northern Arizona	USD	3 p.m.
	M. Tennis	UCLA	UCLA	1:30 p.m.
	W. Tennis	Minnesota	USD	1:30 p.m.
9	M. Baseball	Arizona	U.A.	2 p.m.
	W. Basketball	Cal Poly-SLO	CPSLO	7:30 p.m.
	W. Swimming	UCSD Relays	UCSD	All Day
10	M. Tennis	Nevada-Las Vegas	USD	10 a.m.
11	W. Tennis	UCSD	USD	2:30 p.m.
12	W. Basketball	USIU	USD	7:30 p.m.
	M. Baseball	Claremont-Mudd	CMS	2:30 p.m.
	W. Tennis	BYU	USD	1:30 p.m.
12-16	W. Tennis	U. Of Az. Tourney	U.A.	All Day
13	M. Tennis	N.E. La.	USD	1 p.m.
14-16	M. Tennis	S.D. Intercollegiate	USD	All Day
15	M. Basketball	Santa Clara	S.C.	7:30 p.m.
	W. Basketball	UCSD	UCSD	7:30 p.m.
	M. Baseball	UC Riverside	USD	2:30 p.m.
16	M. Basketball	St. Mary's	SMC	7:30 p.m.
	M. Baseball	U.C. Riverside (2)	UCR	12 p.m.
17	W. Basketball	U.C. Santa Barbara	USD	7:30 p.m.
18	M. Baseball	San Diego State	USD	2 p.m.
	M. Tennis	Arizona State	USD	1:30 p.m.
19	M. Baseball	U.C. San Diego	UCSD	2:30 p.m.
20	M. Tennis	San Diego State	USD	1:30 p.m.
21	W. Tennis	C.S. Fullerton	USD	1:30 p.m.
	M. Basketball	Portland	USD	7:30 p.m.
21-23	W. Swimming	Pac. West Chmps.	Seattle	All Day
22	W. Basketball	U.C. Irvine	UCI	7:30 p.m.

## Toreros off to a fast start

Torero Anthony Reuss goes up for a shot in USD's contest against San Diego State earlier this season, a game in which the Aztecs rallied to defeat the Toreros, 57-53. Owners of a 9-4 record in games through January 5, USD will open defense of its West Coast Athletic Conference championship with a home game against Pepperdine on January 19.

## Season outlook

## Good year for cagers?

The USD men's basketball team, under the direction of new coach Hank Egan, has its work cut out this season as the Toreros seek to defend the West Coast Athletic Conference championship they earned last season with a 9-3 conference, 18-10 overall mark.

The Toreros lose five seniors from last season, including leading scorer Mike Whitmarsh (18.8 ppg, First Team WCAC). Four starters return, but one of them, guard Mark Bostic, broke a bone in his foot before the season started and is lost for the year.

Other returning starters include the much-improved Anthony Reuss, who averaged 11.7 ppg and 6.4 rpg and led the conference in field goal shooting percentage last season with a 61.9 accuracy rate while earning All-WCAC First Team honors.

Also back is starting center Scott Thompson, a 6-11 sophomore who was named conference Freshman of the Year last year after he averaged 7.1 ppg, 4.8 rpg and 1.3 blocked shots per game.

The third returning starter is guard Chris Car, who played point guard last year and averaged 5.8 ppg while directing the offense.

Other returnees include junior center Mario Coronado, sophomore forwards Nils Madden and Steve Krallman and sophomore guard Eric Musselman. They will be joined by seven newcomers to the squad.

☆☆☆☆

The 1984-85 season holds great promise for USD women's basket-

ball coach Kathy Marpe and her squad.

The Toreros return nine players from the team that compiled a 14-14 record last season, best ever in school history. That nucleus and the addition of some talented newcomers could mean a banner season in 1984-85.

Junior Debbie Theroux and senior captain Mary Stanbra head the list of returning players. Both played in the front court last season, but with some added height on the roster, will see action at guard this campaign. Theroux led the club with an average of 10.9 points and 9.3 rebounds per game last season, while Stanbra scored at a 9.5 ppg clip and averaged 3.4 rebounds.

The top newcomer is 6-0 sophomore forward Cathy O'Brien, who redshirted last season after transferring from the University of Notre Dame. O'Brien holds the San Diego - CIF records for career points and rebounds, set while she attended San Marcos High School.

☆☆☆☆

A young USD women's swim team will seek to gain experience during the 1984-85 season, according to coach Gary Becker.

"It's somewhat of a small team, so we'll be stressing individual improvement," says Becker. "Winning meets would be an added bonus, but what we're really looking for is for the women just to do the best they can out there."

# Annual Report Honor Roll of Donors 1983-84



## Building a better world

Knowledge is the key to building a better world—a goal important to all of us. Knowledge can solve world hunger problems, erase disease and lead us to a better understanding of our global neighbors. Knowledge in itself, however, can be destructive unless it is grounded in values that promote the betterment of all humankind.

At the University of San Diego we combine knowledge and values. The University educates young men and women for today's modern world utilizing Catholic traditions and values which have guided millions of people through the centuries. Our mission is dedicated to producing well-rounded graduates who not only are competent in their fields, but who recognize their responsibility toward all humanity.

We bring you this report to share some of our achievements of the past year. We continued to progress towards our never-ending quest for educational excellence.

Signs of progress included completion of three new buildings—the Manchester Executive Conference Center, the Helen K. and James S. Copley Library, and Olin Hall. Faculty growth continued, with outstanding new professionals in several fields. One professor was named a Fulbright Scholar. A record number of students graduated in June.

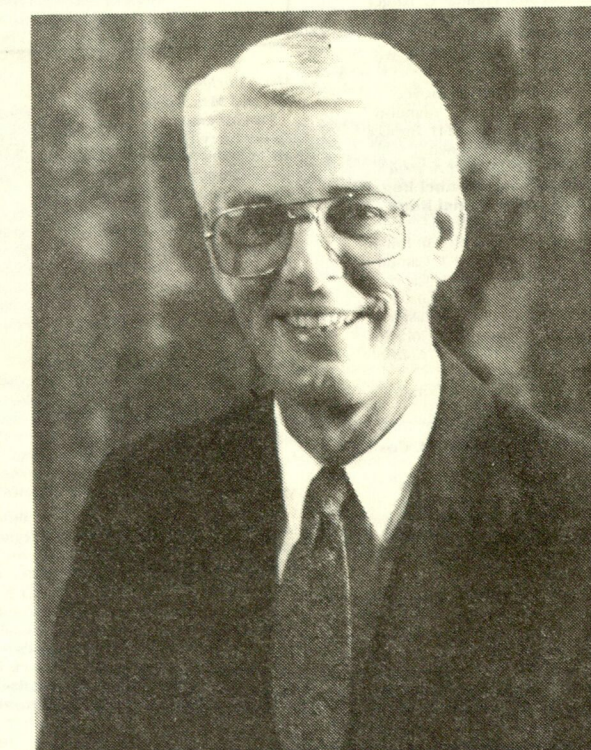
The achievements of the past provide a bright backdrop of enthusiasm as we look towards the future. In the years ahead, we must continue to seek a higher level of academic excellence while remaining committed to our Catholic heritage. More scholarships are needed for deserving students. Our endowment must be strengthened. We must continue to improve our facilities to meet the needs of our burgeoning student body.

It is the steadfast support of the thousands of people whose names are included in this report that brings our dreams of progress to reality. We are extremely grateful to all of them. We are also thankful for the thousands of friends who spread USD's message among the local and national community.

As we plan our future we pledge to continue educating students who will make this world a better place for all of us.

*Author E. Hughes*

Author E. Hughes, Ph.D.  
President





## Honor Roll

The University of San Diego is pleased to acknowledge its many benefactors. The roster below reflects gifts received during the University's fiscal year, September 1, 1983 through August 31, 1984.

Boldface indicates first-time donors; italics indicate an increase in the size of the gift compared to the previous year. Symbols following donor names denote the following memberships of gift classifications: (L), School of Law supporter; (\*), graduate school alumni; (PC), President's Club; (LM), Life Member; President's Club; (AS), Alcala Society; School of Law (MF), Maudsley Fellows; (AD), Dean's Counsel; (AC), Advocates.

## President's Club

The President's Club, formed in 1973, is an annual recognition group comprised of alumni, parents, and friends who contribute \$1,000 or more each year to the University and its programs.

## Life Members

President's Club Life Members are those benefactors who have made a one time, unrestricted commitment of \$25,000 or more to the University.

Friend of USD  
Mr. and Mrs. Thomas C. Barger  
Mr. and Mrs. John D. Boyce  
Mr. and Mrs. Terrence R. Caster  
Mr. and Mrs. Philip R. Crippen, Jr.  
Mr. and Mrs. Richard L. Erion  
Mr. and Mrs. Charles M. Grace  
Joan B. Kroe  
Jeanine and Larry Lawrence  
Mr. and Mrs. Josiah L. Nepper  
Mr. and Mrs. Michael D. Pearlman  
Mrs. Clarence Schick  
Mrs. Carl A. Weber  
Mrs. Eileen Whitaker

## Members

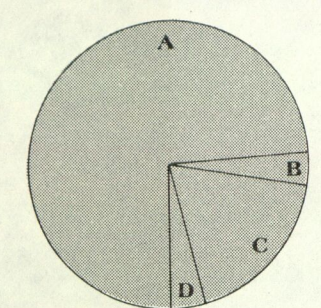
Friend of USD  
**Jack L. Adams**  
Mr. and Mrs. Richard C. Adams  
*Drs. Bernard and Ethel Aginsky*  
Mr. and Mrs. Harold M. Agnew  
Mr. and Mrs. Frank D. Alessio  
**Mr. and Mrs. Michael P. Alessio**  
Mr. and Mrs. Carlton R. Appley  
Mrs. Rosary Arcaro  
**Robert and Sherrill Baker**  
Mr. and Mrs. Thomas C. Barger  
Dr. and Mrs. Wilson B. Baugh  
Legler Benhough  
Mr. and Mrs. Thomas G. Blake  
Mrs. William R. Boehm  
Dr. and Mrs. John D. Boyce  
Dr. and Mrs. Milan L. Brandon  
Mr. and Mrs. Donald H. Brewer  
Dr. and Mrs. Ed Brown  
**Mr. and Mrs. Robert A. Brue**  
**Mr. and Mrs. Daniel Bunn**  
Mrs. Helen Anne Bunn  
Dr. and Mrs. Timothy M. Burns  
Dr. and Mrs. Robert T. Campion  
Dr. and Mrs. Joseph A. Capozzi  
*Mrs. Albert Seabold Casey*  
Mr. and Mrs. Terrence Caster  
Mr. and Mrs. James W. Colachis  
*Mrs. Harry A. Collins*  
Dr. and Mrs. John N. Comito  
**David Copley**  
Mrs. Helen K. Copley  
**Mr. and Mrs. Joseph D. Costello**  
A. M. Butch Courty  
Mr. and Mrs. Lawrence Cox  
**Dr. and Mrs. John R. Coy**  
Mr. and Mrs. Philip R. Crippen, Jr.  
**Mr. and Mrs. Jack Crivello**  
Mr. and Mrs. Lawrence A. Cronin, Jr.  
Dr. and Mrs. William P. Carran  
Dr. and Mrs. Stephen P. Cushman  
Mr. and Mrs. Murphy L. Curtis  
Mrs. Lowell Davies  
*Mr. and Mrs. Alex DeBakus*  
Mr. and Mrs. William J. DeLine  
Mr. and Mrs. Dan Derbes

## Financial Highlights 1983-1984

The University of San Diego's financial situation was once again very sound in 1983-84.

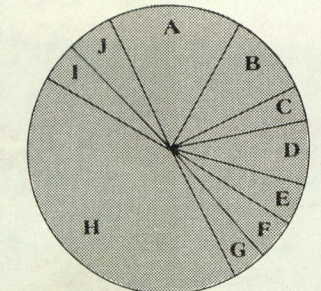
For the ninth consecutive year, the university maintained a balanced current operation. Total gift income to the university leaped to \$6.8 million in 1983-84, an 81 percent increase from \$3.75 million in 1982-83. Gifts to the Annual Fund, which are used for current operations, grew 58 percent to \$938,000. Alumni and business donors increased their gift support.

## Revenues



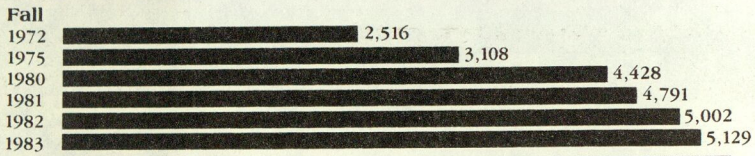
- A) Tuition & Fees = 74%  
B) Grants & Gifts = 4%  
C) Auxiliary = 19%  
D) Other = 3%

## Expenditures and Mandatory Transfers

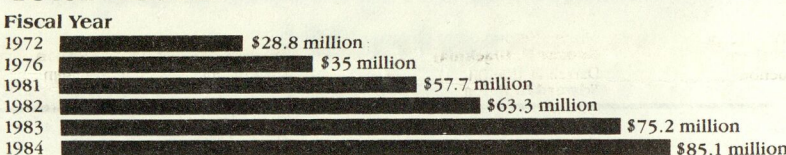


- A) Auxiliary—16%  
B) Institutional Support—11%  
C) Plant—4%  
D) Student Aid—8%  
E) Academic Support—5%  
F) Student Services—5%  
G) Athletic & Recreation—4%  
H) Instruction—35%  
I) Debt Service—5%  
J) Transfer to Other Funds & Surplus of \$124,781—7%

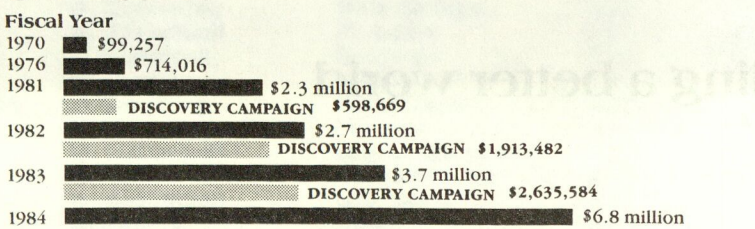
## Enrollment



## Total Assets



## Gift Income



*Mrs. Charles Deto* (L)  
**Mr. and Mrs. Louis J. Devincenzi**  
Father Larry Dolan  
Mr. and Mrs. William L. Donahue  
Mr. and Mrs. William R. Hilligoss  
Mr. and Mrs. W.G. Duflock, Sr.  
Mr. and Mrs. Dean R. Dunphy  
Mr. and Mrs. Ernest O. Ellison  
Mr. and Mrs. Robert L. Hope, Sr.  
Dr. and Mrs. Arthur E. Hughes  
*Mr. and Mrs. Peter J. Hugbee* (L)  
*Mr. and Mrs. Robert M. Hughes*  
Mr. and Mrs. William T. Huston  
Mr. and Mrs. John J. Jachym  
Mr. and Mrs. William T. Ward  
Mr. and Mrs. Jack Jolley  
**Gary and Georgia Jost**  
Mr. and Mrs. Samuel J. Kahn  
Mr. and Mrs. Arthur H. Kaplan (L)  
Mr. and Mrs. Nicholas L. Frazee  
C. Hugh Friedman & Lynn A. Schenk (L)  
Mr. and Mrs. C.E. Fruin  
Gene Gamble  
Mr. and Mrs. Anthony Ghio  
Mr. and Mrs. William J. Phillip  
**William F. Gilmore**  
*Mr. and Mrs. James R. Gier*  
Mr. and Mrs. Robert M. Golden  
Mr. and Mrs. Eugene V. Klein  
Mr. and Mrs. Frederick Kleinbush  
Joan B. Kroe  
Jeanine and Larry Lawrence  
**Mr. and Mrs. Thomas Leonardini**  
Lester A. Levy  
Mr. and Mrs. Gary J. Lohne  
**Timothy Hubert L. Madden**  
Bishop Leo T. Maher, D.D.  
Mr. and Mrs. Douglas F. Manchester  
**Dr. and Mrs. Peter J. Maturo**  
**Ronald R. Mester**  
**Thomas E. Mullen**  
**Mr. and Mrs. Joseph W. Mullen, Jr.**  
**Mr. and Mrs. Daniel E. Mulvihill**  
*Richard J. Muscio*  
Mr. and Mrs. Josiah L. Nepper  
**Mr. and Mrs. Harold W. Nichols**  
Mr. and Mrs. S. Falk Nielsen  
Mr. and Mrs. Dean N. Ninteman  
David Packard  
Mr. and Mrs. Chester C. Pagni  
Mr. and Mrs. George M. Pardee, Jr.  
Mr. Timothy D. Parkman  
Dr. and Mrs. Frank Pavel

Mr. and Mrs. Larry D. Hartwig  
Joseph Hauber  
**Mr. and Mrs. J. T. Hawthorne**  
**Mr. and Mrs. Theron L. Hedgpath**  
Mr. and Mrs. Joseph W. Hibben  
Mr. and Mrs. William R. Hilligoss  
Mr. and Mrs. W.G. Duflock, Sr.  
Mr. and Mrs. Dean R. Dunphy  
Mr. and Mrs. Ernest O. Ellison  
Mr. and Mrs. Robert L. Hope, Sr.  
Dr. and Mrs. Arthur E. Hughes  
*Mr. and Mrs. Peter J. Hugbee* (L)  
*Mr. and Mrs. Robert M. Hughes*  
Mr. and Mrs. William T. Huston  
Mr. and Mrs. John J. Jachym  
Mr. and Mrs. William T. Ward  
Mr. and Mrs. Jack Jolley  
**Gary and Georgia Jost**  
Mr. and Mrs. Samuel J. Kahn  
Mr. and Mrs. Arthur H. Kaplan (L)  
Mr. and Mrs. Nicholas L. Frazee  
C. Hugh Friedman & Lynn A. Schenk (L)  
Mr. and Mrs. C.E. Fruin  
Gene Gamble  
Mr. and Mrs. Anthony Ghio  
Mr. and Mrs. William J. Phillip  
**William F. Gilmore**  
*Mr. and Mrs. James R. Gier*  
Mr. and Mrs. Robert M. Golden  
Mr. and Mrs. Eugene V. Klein  
Mr. and Mrs. Frederick Kleinbush  
Joan B. Kroe  
Jeanine and Larry Lawrence  
**Mr. and Mrs. Thomas Leonardini**  
Lester A. Levy  
Mr. and Mrs. Gary J. Lohne  
**Timothy Hubert L. Madden**  
Bishop Leo T. Maher, D.D.  
Mr. and Mrs. Douglas F. Manchester  
**Dr. and Mrs. Peter J. Maturo**  
**Ronald R. Mester**  
**Thomas E. Mullen**  
**Mr. and Mrs. Joseph W. Mullen, Jr.**  
**Mr. and Mrs. Daniel E. Mulvihill**  
*Richard J. Muscio*  
Mr. and Mrs. Josiah L. Nepper  
**Mr. and Mrs. Harold W. Nichols**  
Mr. and Mrs. S. Falk Nielsen  
Mr. and Mrs. Dean N. Ninteman  
David Packard  
Mr. and Mrs. Chester C. Pagni  
Mr. and Mrs. George M. Pardee, Jr.  
Mr. Timothy D. Parkman  
Dr. and Mrs. Frank Pavel

*Mr. and Mrs. Michael D. Pearlman*  
Dr. and Mrs. Richard P. Phillips  
*Mr. and Mrs. J. T. Powell*  
Mr. and Mrs. Leland S. Prussia  
Mrs. Happy Redfern  
Frank Ribelin  
*Harlyn M. Roe*  
Mr. Leo Roon  
Mr. and Mrs. Harold Sadler  
Mrs. Irving Salomon  
Mr. and Mrs. Barry J. Shillito  
**Mr. and Mrs. Christopher Sickels**  
Prof. and Mrs. Bernard H. Siegan (L)  
Mr. and Mrs. O. Morris Sievert  
Mr. and Mrs. S. G. Siksek  
Dr. and Mrs. Richard A. Simon  
Mrs. James E. Spain  
Msgr. William D. Spain  
Mr. and Mrs. Harold B. Starkey, Jr.  
Mrs. Clarence Steber  
Mr. and Mrs. Donald V. Tartre  
*Mrs. Claire Tavares*  
Mr. and Mrs. Robert H. Taylor  
Mr. and Mrs. Ralph J. Tenita  
Mr. and Mrs. John M. Threlkirk  
**Mr. and Mrs. William Threlkirk**  
Hon. and Mrs. Anthony C. Tomczak  
Mr. and Mrs. A. Eugene Trepte  
*Mr. and Mrs. J. T. Trilly*  
Mr. and Mrs. George Vojtko  
Mr. and Mrs. Lincoln R. Ward  
Mr. and Mrs. Theodore S. Giesel  
M. H. Golden Company  
Ernest W. & Jean E. Hahn  
Foundation  
Mr. and Mrs. Larry D. Hartwig  
R. E. Hazard Contracting Co.  
Home Federal Savings & Loan  
William F. Black  
Mrs. Kenneth and Marjorie Blanchard  
Kurt J. Bomar  
Admiral and Mrs. William F. Bringle, USN (Ret)  
Broadway Southern California  
Duane Wallace  
Melinda L. Weiss  
Hon. and Mrs. Louis M. Welsh  
Mr. and Mrs. Frank T. Weston  
D. D. Whitman  
Mr. and Mrs. Joseph R. Cannon  
Mr. and Mrs. Joseph M. Cox  
Elizabeth Jo Carbajal  
Carlson Travel Service, Inc.  
Capt. and Mrs. John E. Carr  
Alberta Seabold Casey  
Easter Family Trust  
Sarah Cohen  
Major and Mrs. J.E. Clancy  
Vivian M. Clark  
Mr. and Mrs. Ben Gardner Clay  
Mr. and Mrs. Joseph B. Clay  
Mr. and Mrs. George Codling  
Mr. and Mrs. James W. Colachis  
Mr. and Mrs. William T. Ward  
Dr. and Mrs. John N. Comito  
ConAm Management Corporation  
Mr. and Mrs. Dempsey D. Copeland  
Mersey Hospital & Medical Center  
Mr. and Mrs. Daniel F. Mulvihill  
Mr. and Mrs. George M. Pardee, Jr.  
Mr. and Mrs. John H. Parrish  
Dr. and Mrs. Robert G. Petersdorf  
Dr. and Mrs. Richard W. Rauch  
Marilyn M. Roe  
Cubic Corporation  
Mr. and Mrs. Allen W. Cunningham  
Rug Cunningham

## Inaugural Ball

Through the generosity of Mr. and Mrs. Douglas E. Manchester, the Philip Y. Hahn School of Nursing was benefitted on the occasion of the grand opening of the Hotel Inter-Continental, April 28, 1984.

The following are supporters of the Inaugural Ball.

## Underwriting Patrons

Helen K. Copley  
Mr. and Mrs. Douglas F. Manchester  
**Table Patrons**  
Friend of U.S.D.  
Mr. and Mrs. Jack L. Adams  
Mrs. Bernard W. and Ethel Aginsky  
American Business Company  
Anthony's Fish Grotto  
Atlas Foods  
Robert Baldwin  
Dr. and Mrs. Manuel Barba  
Dr. and Mrs. Wilson B. Baugh  
Mr. and Mrs. Edward K. Baumer  
Paulette Marlene Becker  
The Berglund Trust  
Jon M. Bilger  
William F. Black  
Mrs. Kenneth and Marjorie Blanchard  
Kurt J. Bomar  
Admiral and Mrs. William F. Bringle, USN (Ret)  
Broadway Southern California  
Duane Wallace  
Melinda L. Weiss  
Hon. and Mrs. Louis M. Welsh  
Mr. and Mrs. Frank T. Weston  
D. D. Whitman  
Mr. and Mrs. Joseph R. Cannon  
Mr. and Mrs. Joseph M. Cox  
Elizabeth Jo Carbajal  
Carlson Travel Service, Inc.  
Capt. and Mrs. John E. Carr  
Alberta Seabold Casey  
Easter Family Trust  
Sarah Cohen  
Major and Mrs. J.E. Clancy  
Vivian M. Clark  
Mr. and Mrs. Ben Gardner Clay  
Mr. and Mrs. Joseph B. Clay  
Mr. and Mrs. George Codling  
Mr. and Mrs. James W. Colachis  
Mr. and Mrs. William T. Ward  
Dr. and Mrs. John N. Comito  
ConAm Management Corporation  
Mr. and Mrs. Dempsey D. Copeland  
Mersey Hospital & Medical Center  
Mr. and Mrs. Daniel F. Mulvihill  
Mr. and Mrs. George M. Pardee, Jr.  
Mr. and Mrs. John H. Parrish  
Dr. and Mrs. Robert G. Petersdorf  
Dr. and Mrs. Richard W. Rauch  
Marilyn M. Roe  
Cubic Corporation  
Mr. and Mrs. Allen W. Cunningham  
Rug Cunningham

## Warren Family Foundation

Lo Welsh

## Donors

Friend of U.S.D.  
Mr. and Mrs. Jack L. Adams  
Mrs. Bernard W. and Ethel Aginsky  
American Business Company  
Anthony's Fish Grotto  
Atlas Foods  
Robert Baldwin  
Dr. and Mrs. Manuel Barba  
Dr. and Mrs. Wilson B. Baugh  
Mr. and Mrs. Edward K. Baumer  
Paulette Marlene Becker  
The Berglund Trust  
Jon M. Bilger  
William F. Black  
Mrs. Kenneth and Marjorie Blanchard  
Kurt J. Bomar  
Admiral and Mrs. William F. Bringle, USN (Ret)  
Broadway Southern California  
Duane Wallace  
Melinda L. Weiss  
Hon. and Mrs. Louis M. Welsh  
Mr. and Mrs. Frank T. Weston  
D. D. Whitman  
Mr. and Mrs. Joseph R. Cannon  
Mr. and Mrs. Joseph M. Cox  
Elizabeth Jo Carbajal  
Carlson Travel Service, Inc.  
Capt. and Mrs. John E. Carr  
Alberta Seabold Casey  
Easter Family Trust  
Sarah Cohen  
Major and Mrs. J.E. Clancy  
Vivian M. Clark  
Mr. and Mrs. Ben Gardner Clay  
Mr. and Mrs. Joseph B. Clay  
Mr. and Mrs. George Codling  
Mr. and Mrs. James W. Colachis  
Mr. and Mrs. William T. Ward  
Dr. and Mrs. John N. Comito  
ConAm Management Corporation  
Mr. and Mrs. Dempsey D. Copeland  
Mersey Hospital & Medical Center  
Mr. and Mrs. Daniel F. Mulvihill  
Mr. and Mrs. George M. Pardee, Jr.  
Mr. and Mrs. John H. Parrish  
Dr. and Mrs. Robert G. Petersdorf  
Dr. and Mrs. Richard W. Rauch  
Marilyn M. Roe  
Cubic Corporation  
Mr. and Mrs. Allen W. Cunningham  
Rug Cunningham

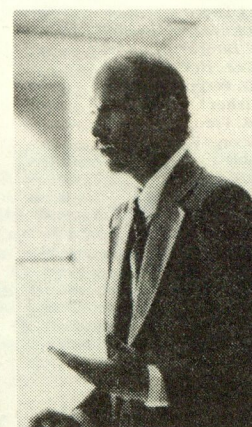
Pauline D'Agostino  
Mr. and Mrs. Donald L. Daley, Jr.  
Joseph K. Davis  
Mrs. Lowell Davies  
Mr. and Mrs. Jeffrey B. Davis  
Mr. and Mrs. Alex DeBakus  
Deik Properties  
Mrs. Charles Deto  
Evelyn Jean Dicks  
Margaret C. Donoghue  
Dunphy Construction Company  
Slim Durham  
David T. Easley  
Dr. and Mrs. C. R. Eckstein  
Sue Keudender Edwards  
W. G. Ethnick Sheet Metal Works  
Mr. and Mrs. Paul Engstrand  
Mr. and Mrs. David E. Ernie  
Martin Fenton, Jr.  
Garnette Fletcher-Overdorf  
Jill Gilware, Inc.  
Dr. Anita V. Figueroa  
Flour City Architectural Metals  
Fr. Patrick Fox  
Prof. and Mrs. George Gafford  
Gingiss Formal Wear No. 5222  
Mrs. Murray D. Goodrich  
Rosemary T. Goodyear  
Mr. and Mrs. Charles M. Grace  
Mr. and Mrs. E. T. Garvete, Jr.  
Graduate Nursing Students Association  
Robert H. Grant Charitable Trust  
Mr. and Mrs. Donald Groden, Jr.  
Mr. and Mrs. Albert Grossman  
Mr. and Mrs. Gary Hahn  
Mr. and Mrs. Robert Harbison  
Frances G. Harpet  
Mr. and Mrs. Mario Hernandez  
Eleanor B. Herzman  
Joseph W. Hibben  
Hirsch-Bedner and Associates  
Mr. and Mrs. Joseph Hoffman  
Lt. Col. Virginia A. Horton  
Mr. and Mrs. Mark J. Horsford  
Houge's Light Tractor Service  
I. Howard and Associates, Inc.  
Mr. and Mrs. Peter J. Hughes  
Tricia Hunter  
IVAC Corporation  
Mr. and Mrs. William F. Jensen  
Dr. and Mrs. Ronald Johnson  
Dr. and Mrs. M. C. Jorgensen  
Carol J. Judkins  
Mr. and Mrs. Edward T. Keating  
Dr. and Mrs. Edmund L. Keeney  
William Kellinger  
Suzanne Khamhata  
Mr. and Mrs. Charles King  
Neil A. Kjos, Jr.  
Lt. General and Mrs. Victor H. Krulak  
John C. Laue, D.D.S.  
Judith Lessard  
Kathryn R. Maas  
Jo Malstrom-Olita  
Shigeko Jane Makamura  
Dr. and Mrs. David A. Mathison  
Dr. and Mrs. John H. Mazur  
Erwin Millimet  
Vern J. Mortenson  
Anne Marie Mulligen  
Mr. and Mrs. Joseph E. Munoz  
Mr. and Mrs. Thomas P. Napier, Jr.  
Nathan Steel and Shipbuilding Company  
Mr. and Mrs. Josiah L. Nepper  
Mr. and Mrs. S. F. Nielsen  
Ninteman Construction Company  
Stanley A. Nowak  
Mr. and Mrs. Lincoln Y. Okita  
Dr. and Mrs. David R. Olmstead  
Mary E. Oliver  
Kenneth E. Olson  
Pacific Bell  
Irene S. Palmer, Ph.D.  
Peat, Marwick, Mitchell & Company  
Mr. and Mrs. Aubrey L. Pettit, Jr.  
Mr. and Mrs. Kenneth Poovey  
Mr. and Mrs. Jack L. Powell  
Joseph Darby  
Albert V. De Leon  
Steven R. Denton  
Don Ernst  
Michael S. Evans  
Donald N. Feld  
Charles J. Fellmeth  
**Sergio Fera**  
**Thomas Fiorello**  
Curtis M. Fitzpatrick  
Richard R. Freeman  
Milton Freeman  
Roy H. Gann  
Mr. and Mrs. David B. Gealer  
Marty Jo George  
Hon. and Mrs. David Gill  
Norma M. Gazares Gimber  
Ella Jack Ginn  
**Ricardo M. Gonzalez**  
**James R. Gorman**  
Robert L. Grimes  
Daniel W. Grindle  
James L. Hall  
Carol Hallstrom  
Alex A. Harper  
Robert R. Heft  
Marshall V. Hockett  
Patricia Hooper  
Steven R. Hunnicke  
Daryl C. Idler, Jr.  
**Patrick Irvine**  
*Charles J. Jamison*  
**L. Scott Keecher**  
John D. Kellner  
Webster B. Kinnaird  
John P. Kochis  
Sheldon Krantz  
William M. Krause  
Daniel R. Krinsky  
Homer Kripke  
*John B. LaRoque*  
Donald P. Lang  
Hon. and Mrs. Louis M. Welsh  
Mr. and Mrs. Frank T. Weston  
D. D. Whitman  
Mr. and Mrs. Joseph R. Cannon  
Mr. and Mrs. Joseph M. Cox  
Elizabeth Jo Carbajal  
Carlson Travel Service, Inc.  
Capt. and Mrs. John E. Carr  
Alberta Seabold Casey  
Easter Family Trust  
Sarah Cohen  
Major and Mrs. J.E. Clancy  
Vivian M. Clark  
Mr. and Mrs. Ben Gardner Clay  
Mr. and Mrs. Joseph B. Clay  
Mr. and Mrs. George Codling  
Mr. and Mrs. James W. Colachis  
Mr. and Mrs. William T. Ward  
Dr. and Mrs. John N. Comito  
ConAm Management Corporation  
Mr. and Mrs. Dempsey D. Copeland  
Mersey Hospital & Medical Center  
Mr. and Mrs. Daniel F. Mulvihill  
Mr. and Mrs. George M. Pardee, Jr.  
Mr. and Mrs. John H. Parrish  
Dr. and Mrs. Robert G. Petersdorf  
Dr. and Mrs. Richard W. Rauch  
Marilyn M. Roe  
Cubic Corporation  
Mr. and Mrs. Allen W. Cunningham  
Rug Cunningham

## Ronald Maudsley Fellows

*Drs. Bernard and Ethel Aginsky*  
Mark L. Brandon  
Louis M. Brown  
Mr. and Mrs. A. S. Carstens  
Michael C. Clark  
Prof. and Mrs. Kenneth C. Davis  
Mrs. Charles Deto  
C. Hugh Friedman  
**Mr. and Mrs. E. Miles Harvey**  
**James T. Waring**  
Donald T. Weckstein  
Mr. and Mrs. Peter Weinstein  
**Richard J. Wharton**  
**S. Charles Wickersham**  
Charles E. Wiggins  
Alan L. Williams  
Jerry Williams  
**Floyd M. Willoughby**  
J. Michael Wilson  
**Robert C. Wood**  
**Donald R. Worley**

## Dean's Counsel

**Robert K. Athy**  
Mrs. Richard and Janet Gilman  
**Ralph Gano Miller**  
John G. Phillips  
Mr. and Mrs. Justus Spiller



## Advocates

Friend of USD  
Friend of USD  
Prof. and Mrs. Larry Alexander  
Doris Y. Alspaugh  
Mr. and Mrs. Robert E. Bennett  
**Gayle E. Anderson**  
**Thomas M. Apke**  
**Brewster Arms**  
**George B. Blackmar**  
Dr. and Mrs. E. T. Clancy  
John Cleary, M.D.  
**Mr. and Mrs. John E. Cockburn**  
Dr. and Mrs. William R. Coleman  
Mr. and Mrs. Terry Conner  
**Gordon R. and Mary T. Cooke**  
Mr. and Mrs. John A. Cosco, Jr.  
**Mr. and Mrs. Dave Cox**  
*Robert S. Crossdale*  
**Ronald C. Prast**  
Glory Odgers Cumming  
Dr. and Mrs. John E. Cutler  
**Mr. and Mrs. John E. D'Agostino**  
*Mrs. Dor J. D'Agostino Sabatino*  
*Mr. and Mrs. Leonard J. Dalton*  
*Mr. and Mrs. Charles E. Davis*  
Mrs. Richard and Carla Davis  
Dr. and Mrs. Edward DeRoche  
*Mr. and Mrs. Frank DeSantis*  
**Mr. and Mrs. Bert Degheri**  
**Mr. and Mrs. John J. Deffino**  
**Richard J. DiGiustino**  
Mr. and Mrs. James A. Diani  
**Mr. and Mrs. Kenneth A. Diehl**  
**Mr. and Mrs. J. V. Dooley**  
*Dr. and Mrs. Nevin H. Downs*  
Mr. and Mrs. Anthony Duaseck  
*J. D. Duack*  
**Mr. and Mrs. Richard G. Duncan**  
**Mr. and Mrs. Andrew P. P. Dunn, II**  
*Mr. and Mrs. John E. Durnin*  
Mr. and Mrs. Cla Edgington, III  
*Mimi L. Zolzei Edwards*  
Mr. and Mrs. Maurice E. Egan  
Anthony Ehmann  
Mr. and Mrs. Paul J. Eklund  
*Iris Engstrand*  
*Mr. and Mrs. Tom Erickson*  
Mr. and Mrs. Jerome W. Ernst  
**Mr. and Mrs. Burke E. Erle**  
*Dr. and Mrs. Melvin A. Esley, Jr.*  
*Mr. and Mrs. W. A. Evans*  
Sandy and Jerry Farrell  
Mr. and Mrs. William Farrow  
Patricia B. Farwell  
**Henry T. Fisher**  
Mr. and Mrs. David Fitz  
Larry D. Flores  
**Mr. and Mrs. Terry L. Forder**  
Michael E. Fox, Jr.  
**Fred L. Fredericks**  
Mr. and Mrs. Verne D. Freeman  
**Mr. and Mrs. Gerald J. Frey**  
**Gary Funakoshi**  
Gloria Gagliardi  
Mr. and Mrs. John C. Galvin  
**Douglas A. Gaudin**  
**Hugh S. Gault, Jr.**  
Dale and Bill Garratt  
Mr. and Mrs. Stephen George, Jr.  
Mr. and Mrs. Earl F. Glenn, Jr.  
**Thomas E. Goddard**  
Mr. and Mrs. Harold A. Godwin  
*Mr. and Mrs. David R. Gonzalez*  
*John B. Goldfreder*  
Mr. and Mrs. George A. Green  
Mr. and Mrs. Kevin R. Green  
Mr. and Mrs. R. Clemson Griggs  
Timothy James Groff  
**Mr. and Mrs. Edward Hanlon**  
**Bill Heath**  
John R. Henkel (L)  
**Paul V. Neger**  
**Patrick O'Day**  
**James E. O'Neal**  
*Clement J. O'Neill*  
*Kathryn Lori Patrick*  
**Judith Peters**  
Theresa Player  
Thomas Polakiewicz  
*Kathryn J. Raffee*  
Jean Daze Ratelle, II  
*Robert Robinson*  
*Larry D. Rosenstein*  
**Thomas W. Rutledge**  
Mr. and Mrs. Gary W. Schons

## More Hall Advocates

More Hall Advocates was formed in 1981 as an annual support group for the School of Law. Alumni, parents, and friends can participate at one of three levels: Ronald Maudsley Fellows, \$1,000 or more; the Dean's Counsel, \$500 to \$999; and the Advocates, \$100 to \$499.

**Archie Shaffer**  
Thomas E. Sharkey  
Mr. and Mrs. Jack P. Shoemaker  
Robert Simmons  
**James Splevak**  
Raymond Theep  
John D. Thelan  
Mr. and Mrs. Fox C. Johnson  
Mr. and Mrs. Edgar A. Jones, Jr.  
Cdr. and Mrs. G. J. Kaiser  
Mrs. Thomas W. Keelin  
Mr. and Mrs. William J. Kelly  
Mr. and Mrs. Michael Kenney  
**Mr. and Mrs. Mel K. Kilpatrick**  
*Mr. and Mrs. Charles King*  
*Mr. and Mrs. Stephen King*  
Kenneth H. Kinsman  
**Mr. and Mrs. George R. Kneeland**  
Andrew Kozlowski  
**Mr. and Mrs. E. Anthony Kurtz**  
Mrs. John E. Arbutnot  
Dr. Michael Bajio  
Mr. and Mrs. Thomas Barger  
Mr. and Mrs. Thomas Baugh  
Mrs. Ann Blesener  
John Borchers  
Dr. and Mrs. Joseph Brock  
Mrs. Albert S. Casey  
**Elaine Crane Stage**  
Peggy D'Agostino Thompson  
*Janet Hulla Trily (PC)*

## Alcala Society

The Alcala Society is comprised of alumni, parents and friends who support various USD programs on an annual basis. Gifts of \$100 to \$999 qualify the donor for membership.

Mrs. Paul W. Albern  
**Mr. and Mrs. Burr Allegaert**  
**James D. Mason**  
Dr. and Mrs. John J. Massart  
Mr. and Mrs. Muri M. Maupin  
Bob McCloskey  
Mr. and Mrs. John N. McCord  
Mr. and Mrs. Mike R. McDonnell (L)  
**Mr. and Mrs. John M. McGarry**  
**Mr. and Mrs. Robert McIntyre**  
Mr. and Mrs. John L. McLaughlin  
Robert A. McMahon  
*Carol Ann Micken (L)*  
**Christopher W. Miller**  
Mr. and Mrs. Kenneth E. Miller  
**Ruth Ann and John V. Moore**  
James E. Morley  
*Dr. and Mrs. F. J. Morlino*  
**Peter M. Mueller**  
Mr. and Mrs. John R. Briscoe  
**Mr. and Mrs. Hans Breitch**  
*Dr. and Mrs. Gilbert L. Brown, Jr.*  
*Mr. and Mrs. Peter J. Brusiati*  
**John A. Buell, Jr.**  
Mr. and Mrs. Ronald E. Cady  
Mr. and Mrs. Richard A. Callahan  
Mr. and Mrs. Juan Camacho  
**Armand V. and Norma Campillo**  
*Mr. and Mrs. Louis Cappello*  
Prof. and Mrs. Robert F. O'Neil  
**Manuel Occiano**  
**Mr. and Mrs. Frank A. Oswalt**  
**George Pecoraro**  
Leroy Penndy  
**Barry B. Peters**  
Mr. and Mrs. Du Wayne J. Peterson  
**Mr. and Mrs. Richard E. Pietras**  
Mr. and Mrs. Michael H. Plumer  
Donald D. Pogoloff  
Barbara Pon  
*James Crawford Morlino (AS)*  
Ruth E. Collins Plummer  
Mr. and Mrs. Kevin R. Quinn  
*Gael Lauff Ralph*  
*Mr. and Mrs. Abraham Ratner*  
*Mrs. Dor J. D'Agostino Sabatino*  
*Mr. and Mrs. Leonard J. Dalton*  
*Mr. and Mrs. Charles E. Davis*  
Mrs. Richard and Carla Davis  
Dr. and Mrs. Edward DeRoche  
*Mr. and Mrs. Frank DeSantis*  
**Mr. and Mrs. Bert Degheri**  
**Mr. and Mrs. John J. Deffino**  
**Richard J. DiGiustino**  
Mr. and Mrs. James A. Diani  
**Mr. and Mrs. Kenneth A. Diehl**  
**Mr. and Mrs. J. V. Dooley**  
*Dr. and Mrs. Nevin H. Downs*  
Mr. and Mrs. Anthony Duaseck  
*J. D. Duack*  
**Mr. and Mrs. Richard G. Duncan**  
**Mr. and Mrs. Andrew P. P. Dunn, II**  
*Mr. and Mrs. John E. Durnin*  
Mr. and Mrs. Cla Edgington, III  
*Mimi L. Zolzei Edwards*  
Mr. and Mrs. Maurice E. Egan  
Anthony Ehmann  
Mr. and Mrs. Paul J. Eklund  
*Iris Engstrand*  
*Mr. and Mrs. Tom Erickson*  
Mr. and Mrs. Jerome W. Ernst  
**Mr. and Mrs. Burke E. Erle**  
*Dr. and Mrs. Melvin A. Esley, Jr.*  
*Mr. and Mrs. W. A. Evans*  
Sandy and Jerry Farrell  
Mr. and Mrs. William Farrow  
Patricia B. Farwell  
**Henry T. Fisher**  
Mr. and Mrs. David Fitz  
Larry D. Flores  
**Mr. and Mrs. Terry L. Forder**  
Michael E. Fox, Jr.  
**Fred L. Fredericks**  
Mr. and Mrs. Verne D. Freeman  
**Mr. and Mrs. Gerald J. Frey**  
**Gary Funakoshi**  
Gloria Gagliardi  
Mr. and Mrs. John C. Galvin  
**Douglas A. Gaudin**  
**Hugh S. Gault, Jr.**  
Dale and Bill Garratt  
Mr. and Mrs. Stephen George, Jr.  
Mr. and Mrs. Earl F. Glenn, Jr.  
**Thomas E. Goddard**  
Mr. and Mrs. Harold A. Godwin  
*Mr. and Mrs. David R. Gonzalez*  
*John B. Goldfreder*  
Mr. and Mrs. George A. Green  
Mr. and Mrs. Kevin R. Green  
Mr. and Mrs. R. Clemson Griggs  
Timothy James Groff  
**Mr. and Mrs. Edward Hanlon**  
**Bill Heath**  
John R. Henkel (L)  
**Paul V. Neger**  
**Patrick O'Day**  
**James E. O'Neal**  
*Clement J. O'Neill*  
*Kathryn Lori Patrick*  
**Judith Peters**  
Theresa Player  
Thomas Polakiewicz  
*Kathryn J. Raffee*  
Jean Daze Ratelle, II  
*Robert Robinson*  
*Larry D. Rosenstein*  
**Thomas W. Rutledge**  
Mr. and Mrs. Gary W. Schons

## Puenete de Oro

Puenete de Oro (Bridge of Gold) was formed exclusively to recognize special friends who have made long-range commitments to the University of San Diego through their wills or one of several other deferred giving arrangements.

Jack Adams  
Drs. Bernard and Ethel Aginsky  
Mrs. Peggy Antoniak  
Mrs. John E. Arbutnot  
Dr. Michael Bajio  
Mr. and Mrs. Thomas Barger  
Mr. and Mrs. Thomas Baugh  
Mrs. Ann Blesener  
John Borchers  
Dr. and Mrs. Joseph Brock  
Mrs. Albert S. Casey  
**Elaine Crane Stage**  
Peggy D'Agostino Thompson  
*Janet Hulla Trily (PC)*

## Alumni

**1953**  
Theresa Truit Whitcomb (PC)  
**1955**  
*Ruth A. Jimenez MacKenzie*  
M. Constance Jimenez Salerno  
**1956**  
*Mary Ann Kennedy*  
Kathleen Wollstein Whitaker  
Paula Sablin Woods  
**1957**  
Ed Brown (PC)  
Valeria Dessert Frager (PC)  
Julia Brennan George (AS)  
Mercedes S. Glisson  
Lilia A. Gonzalez  
Mary E. Schaub Itherson  
Jeanne Kramer  
*James Crawford Morlino (AS)*  
Ruth E. Collins Plummer  
**Dorothy B. Reynolds**  
*Marion Rogers Schmidt (AS)*  
Pat McNeil Scott  
Rev. Douglas Regan  
**Dr. and Mrs. Emmett B. Reilly**  
Mr. and Mrs. Walter M. Riegehluth  
**Dr. and Mrs. Stephen J. Riggs**  
Dr. and Mrs. George P. Rigby  
*Mr. and Mrs. William K. Roberts*  
Mr. and Mrs. Anthony N. Rocha  
Mr. and Mrs. Kramer Rohlfisch  
**Mr. and Mrs. R. L. Roy**  
*Miles T. Sakaguchi*  
**Mr. and Mrs. Henry G. Sandvoss**  
Dr. and Mrs. Samuel H. Sandvoss  
*Gerard Schilling, M.D.*  
*Mr. and Mrs. Paul G. Schloemer*  
*Marion Rogers Schmidt*  
Mr. and Mrs. Gary W. Schons (L)  
Grant A. Taylor  
Dennis V. Schraeder  
**Mr. and Mrs. John M. Seiber**  
William and Mary Sexton  
Janet Naylor M.D.  
**Mary T. Simon**  
*Mr. and Mrs. Walter T. Slaney, Sr.*  
Mr. and Mrs. Robert F. Smith  
Mrs. Francis A. Smith, Sr.  
**Mr. and Mrs. Francesco Soriano**  
Randy D. Spector  
Claire C. Stehly  
**Eduard Still**  
Mrs. Joseph N. Tate  
<



## Page 8

Patricia A. Shields  
Mell G. Underwood  
A. K. Wood\* (L)  
1967  
Patrick Correll Arnett  
John J. Briscoe  
JoAnne Mari Buchholtz  
Fred Carbone  
Susan Bell Chahk  
Rev. Giles Conwell  
Stephen A. Desales  
Donald N. Feld\* (L, AD)  
Sue Ann Green  
Wynne Hayes  
J. Michael Hughes\* (L, AS)  
Rosalia MacRory Lorenzen (AS)  
John J. McCabe, Jr.\* (L, AD)  
Mike R. McDonald\* (L, AS)  
Donna M. McGill  
Diana K. Pennington  
John G. Phillips\* (L, DC)  
Marvin Margu Pickens  
Mary Brooke Quinn  
Robert J. Rosene  
Paul M. Tuominen, Jr. (L)  
Joe N. Turner\* (L)  
Margaret Cunningham Ustick  
Stephen Wujdowski (AS)  
1968  
Sally Sorensen Allegrett (AS)  
James R. Allen  
Edward R. Brice\* (L, AD)  
Norbert R. Bunt\* (L, AD)  
Sandra Kizla Chew  
Constance Salfarich Cutler (AS)  
Dorinda D. Dickstein\* (L)  
Fr. Larry Dolan  
Patricia Hughes Egan\*  
Michael Evans\* (L)  
Jane Francis Flynn\*  
Charles J. Hanlen\*  
Alexa A. Harper\* (L, AD)  
Michael E. Hall, M.D.  
George W. Hunt\* (L)  
Patricia L. Russell Johnson  
Ann Langen Kezarian  
Cecilia Kerweg Mariane  
Marjorie Sutter Mierowa  
Frederick J. Nameth\* (L, AD)  
Kathleen Albers O'Neill  
Dale D. Powell\* (L)  
James W. Street\* (L)  
Richard W. Trost\* (L)  
Kathy Keig Vogel  
Cherry Slattery Wujdowski (AS)  
R. Thomas Wood\* (L)  
1969  
David A. Bateman\* (L)  
Mary Jo Bates  
Robert J. Beaudine, Jr.  
Barbara Biever  
Thomas G. Briggs  
Jeffrey Brown  
Erica Cuddy  
Juliana Barteck Dahl  
Richard J. Davis, M.D. (AS)  
Myriam Pearl Downs (AS)  
John Givens, M.D.  
Dianne Solomon Gonzalez  
Michael P. Humphrey  
Robert H. James\* (L)  
John Francis Kennedy (PC)  
Robert Kirby  
Lawrence Lacombe  
Edward J. Larkin  
Bob McCloskey (AS)  
Douglas McKenna  
Phillip J. Myles\* (L, AS)  
Carolyn Sue Neal  
Christine Vetter Pace\* (L, AD)  
Delroy R. Richardson\* (L)  
Laurence Ugo Rossi  
Ray W. Sherman  
Mrs. Walter T. Storey, Sr. (AS)  
F. David Stevenson\* (L)  
Lucky T. Thompson (AS)  
Margaret Wollitz Tomlinson  
Janis Davidson Tuominen  
1970  
Daniel F. Bishop  
Thomas G. Blake (PC)  
Telen R. Brayfield  
David C. Brice  
Andrew J. Castagnola  
David G. Clark  
Rae V. Clarks  
Anne Dougherty Curry  
Clo Edgington, III\* (L)  
Ruben R. Escobedo (AS)  
Kathleen Walsh Estes (AS)  
Carmel Jean Evans\* (L)  
Regina Bushard Goss  
Mary C. Grant\* (L)  
Bob W. Heston\* (L)  
William H. Heston\* (L)  
Maria Velisouna Iraci  
Anthony Jungman  
William J. Kelly (AS)  
Susan Mae Kennedy Kennedy (PC)  
Michael Kenney (AS)  
William M. Krause\* (L, AD)  
Robert May\* (L)  
Gary Neller\* (L, MF)  
Mary and Philip Pirio  
G. Vincent Reardon  
Mary Ellen Goodie Reardon  
Jeanne Lu Riley  
George K. Ross  
Ida DeGiorgio Scamporr  
Anna A. Schenck\* (L, PC, MF)  
Ida Steele Shepherd  
Estelle Strassler  
Michael J. Switzer  
Joyce Willoughby Timms  
Charles A. Viviano (AS)  
Daniel J. Webster (AS)  
Ronald R. Worley\* (L, AD)  
Howard A. Zlotnick\* (L)  
1971  
John Patterson Albade, Jr.  
John Albato  
Barbara Kline Anderson\* (L)  
Semic J. Anderson\* (L)  
Mary A. Gremier Bettoncourt  
John R. Boone  
Patricia Ann Born  
James Hulpin Castagnola  
Margaret Koch Dambarger  
Catherine De Los Rios  
Michael E. Miller  
Jane McEvilly  
Mary Jo Smith Ghirani  
Anne M. Glouck  
David R. Gonzalez (AS)  
Timothy James Groff (AS)  
James L. Hennessy, Jr. (AS)  
John C. Jarboe\* (L)  
Kathleen Stoddard Kelly (AS)  
Alex Landon\* (L)  
Donald P. Lang\* (L, AD)  
Dwayne V. Lawson  
Stephen A. Mahoney  
Joseph J. Marino  
Christina S. Mead  
Deborah Comfort Miller (AS)  
A. Jackson Muecke  
Mark E. Murphy

Stephen Nasman  
Paul V. Neger\* (L, AD)  
Thomas M. O'Garra  
Peggy Mutscheller Parker  
Michael C. Pate\* (L, AD)  
Judith Peters\* (L, AD)  
Donald F. Rauh  
Rick Sabosky  
Carol Kristufek Salmons  
Sue S. Silva (L)  
Gregory J. Stahl  
Joyce Willoughby Timms\*  
Paul M. Tuominen, Jr. (L)  
Douglas A. Whitford (AS)  
John Waltham (PC)  
Lawrence D. Whittier  
William R. Winship, Jr.\* (L)  
1972  
Joan Schweitzer Ames  
Virginia Wigenstien Bezoumik  
Richard D. Begante\* (L)  
Douglas D. Busch\* (L)  
Margaret Bures Gadowell  
Barbara A. Soutar Carroll  
John F. Cernick  
Diana M. Craft  
John C. Galvin (AS)  
Robert J. Dauber  
Leonnella Ayers Erickson (AS)  
Michael A. Ferrara, Jr.\* (L)  
Edward R. Brice\* (L, AD)  
Sr. M. Benedict Flynn  
Sally Furry\* (L)  
Dennis R. Giles  
Grimes\* (L, AD)  
Michael L. Hall, M.D.\*  
Mary Ann Hester (AS)  
Marshall V. Hockett\* (L, AD)  
Darryl C. Idler, Jr.\* (L, AD)  
Michael B. Kaplan\* (L, MF)  
Daniel R. Krinsky\* (L, AD)  
Barry Ladendorff\* (L)  
Michael Manning  
Marsha Oswalt Milovich  
Anthony F. Moutman\* (L, MF)  
Michael T. Murphy\* (L, AD)  
Raymond F. Nolan  
Mary E. Oliver  
Don Rubin\* (L)  
Donald D. Pogoroff (AS)  
Ronald W. Roberts  
Virginia V. Shue\* (L)  
James Spiveak\* (L, AD)  
Cash A. Stenson\* (L)  
Douglas A. Schwabe\* (L, MF)  
Joseph T. Smith, Jr.  
Robert R. Starkey  
Jeffery H. Tierman\* (L, AD)  
George Udrak  
M. Howard Wayne\* (L)  
Warren R. Williamson\* (L)  
Floyd M. Willoughby\* (L, AD)  
1973  
Michael R. Adkins\* (L)  
C. Edward Arledge  
Susan Higgins Bales  
Louis Boyle  
Steve Cole  
Michael J. Corona\* (L, AD)  
James A. Diani (AS)  
Michael L. Evans  
William R. Fuhrman\* (L)  
Carolyn Butler\*  
James Gase  
Teresa Liberatori Gase  
Barbara Dee Gaudreau  
Daniel W. Grindle\* (L, AD)  
Susan A. Halligan  
Christine Hernandez  
James R. Homola\* (L)  
Hendy Hooper (AD, L)  
Clifford Huffman\* (L)  
Robert G. Johnson\* (L)  
Roger M. Keithly, Jr.  
Mark S. Kessler\* (L)  
Kenneth H. Kinsman (AS)  
Marie Kille  
Kathleen L. Lester  
Claudia Little  
Sergio Luis Lopez\* (L)  
Timothy Luberski (PC)  
Daniel F. Maddox  
Russell J. Mazzola\* (L)  
William K. McClelland, III\* (L)  
Lisa Ann McCloskey  
Richard McDonald\* (L, AD)  
James Mietzel\* (L)  
Ronald Kilburg\*  
Hope M. Kirk  
Elizabeth Childs Klaviter  
Tom Klee  
Claudia M. Lademan  
A. Barry La Forgia\* (L)  
Joanne Higgins Leslie  
Anne L. MacArthur\* (L)  
Michael R. Mannan  
Susan Elaine Mayes  
Liam E. McGee  
1974  
Bruce E. Alexander  
Philip Baje, M.D.  
Robert May\* (L)  
Donald R. Briggs\* (L)  
John J. Cahill, Jr.  
Charles C. Caruso, Jr.  
David S. Casey, Jr.\* (L, AD)  
James Cosgrove  
Thomas J. Cosgrove  
Mrs. R. S. Cramb  
Steven P. Datch\* (L, AD)  
Mary A. Eikel\* (L)  
John R. Ellington\* (L)  
Fr. Peter Escalante  
Jay Courtney Fikes  
Richard R. Freeland\* (L, AD)  
Fred Gatti, Jr. (L)  
Garry B. Gelfand\* (L)  
Gershon D. Greenblatt\* (L)  
Constance Giles  
Joseph L. Harrison  
Judy Fitzpatrick Hughes  
Arthur W. H. Hutchins  
William P. Jache  
L. Scott Keehn\* (L, AD)  
Rosemary Klem  
Arthur K. Law  
Linda Johnson Leslie  
Philip Rockefeller MacArthur  
Patricia Gibb Madock  
Mr. and Mrs. Robert Moore  
Victoria Westcott Nasman  
Brooklyn G. Navarra  
Wallace R. Nugent\* (L)  
Maureen L. Phalen  
Sylvia E. Reinsch  
Michele M. Reoux  
Linda Renick  
Rodney L. Peterson\*  
Rudy W. Powell\* (L)  
Christopher M. Redo  
Ronald P. Lang\* (L, AD)  
Dwayne V. Lawson  
Stephen A. Mahoney  
Joseph J. Marino  
Christina S. Mead  
Deborah Comfort Miller (AS)  
A. Jackson Muecke  
Mark E. Murphy

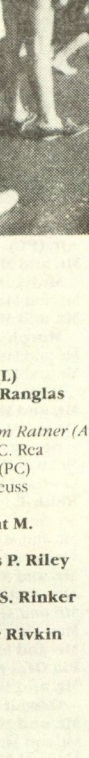
Mike Wagner  
Peter Weinstein\* (L, AD)  
Timothy G. Yashonis  
Mark Zecca  
Cheryl A. Zerah  
1975  
John E. Angus  
James W. Austin, III\* (L)  
Richard P. Berg\* (L, AD)  
Melinda K. Black\*  
Gregory J. Stahl  
Joyce Willoughby Timms\*  
Paul M. Tuominen, Jr. (L)  
Douglas A. Whitford (AS)  
John Waltham (PC)  
Steven R. Denton\* (L, AD)  
Clo Edgington, III\* (AS)  
Vincent A. DiTomasso  
Don Ernst\* (L)  
Richard R. Freeland\* (L)  
Barbara Dee Gaudreau\*  
Anne M. Glouck  
Stephen P. Hackett\* (L)  
Sue Collins Hekman  
Jackie Becker Horton\* (L, MF)  
Joe N. Turner\* (L)  
John C. Galvin (AS)  
Cheryl E. Gann  
Herbert S. Goldstein\* (L)  
Frank Gontarski, M.D.  
Sue P. Brung\* (L)  
Carlos Campos  
Herb S. Goldstein\* (L)  
John P. Kochis\* (L)  
Ann Hester Kuhn  
Mary O'Connor Kyle  
John B. Little\* (L)  
D. Gregory Lynch  
Deborah Lynne  
Robert J. MacFarlane\* (L)  
Teresa Castro McGee  
Linda McMoran  
Lynn Ryder Mason\* (L)  
Mike Meany\* (L)  
Michael Mungini  
Raymond J. Mercado\* (L)  
Edward Nares\* (L, AS)  
Johnnie L. Newton (L)  
Brooks N. Oler\*  
Susan K. Reddings  
Dennis E. Rush  
Thomas W. Rutledge\* (L, AD)  
James G. Sandler\* (L)  
Edward D. Schmidt\* (L)  
Tad J. Schultz  
Douglas A. Schwabe\* (L, MF)  
Jan Alexis Schiray\* (L, MF)  
Joseph T. Smith, Jr.  
Robert R. Starkey  
Jeffery H. Tierman\* (L, AD)  
George Udrak  
M. Howard Wayne\* (L)  
Warren R. Williamson\* (L)  
Floyd M. Willoughby\* (L, AD)  
1976  
Daniel L. Abbott\* (L)  
Clayton M. Anderson\* (L, AD)  
Robert Armstrong\* (L, AD)  
David Bantz  
Michael J. Bond\* (L)  
William A. Bramley, III\* (L)  
Alan K. Brubaker\* (L)  
Barbara J. Burke\*  
Carolyn Butler\*  
Patricia A. Summers  
Christine Cochran Telecast\*  
John T. Palazzo\* (L)  
Ronnie Bottomley Vail  
Daniel L. Velling\* (L)  
Sandra M. Wagner\* (L)  
Stephen Wagner\* (L)  
George A. Phillips  
Pat Wahlheim  
Thomas Fiorio\* (L, AD)  
Mary Geldermann Georgopoulos  
Philip L. Ginsburg\* (L, AD)  
Douglas E. Godde\* (L)  
Charles Gorla\* (L)  
James R. Gorman\* (L, AD)  
Elton R. Green\* (L)  
Sally Ann Greer, Ph.D.  
Colleen M. Guglielmo  
Marillyn H. Hackin  
James S. Heller\* (L)  
Marti Herron\* (L)  
Kent W. Hildreth\* (L)  
Armand M. Hyatt\* (L)  
Henry B. Johnson  
Kendall C. Jones\* (L)  
Carol J. Judkins  
Ronald Kilburg\*  
Hope M. Kirk  
Elizabeth Childs Klaviter  
Tom Klee  
Claudia M. Lademan  
A. Barry La Forgia\* (L)  
Joanne Higgins Leslie  
Anne L. MacArthur\* (L)  
Michael R. Mannan  
Susan Elaine Mayes  
Liam E. McGee  
1978  
Elton R. Green\* (L)  
Sally Ann Greer, Ph.D.  
Colleen M. Guglielmo  
Marillyn H. Hackin  
James S. Heller\* (L)  
Marti Herron\* (L)  
Kent W. Hildreth\* (L)  
Armand M. Hyatt\* (L)  
Henry B. Johnson  
Kendall C. Jones\* (L)  
Carol J. Judkins  
Ronald Kilburg\*  
Hope M. Kirk  
Elizabeth Childs Klaviter  
Tom Klee  
Claudia M. Lademan  
A. Barry La Forgia\* (L)  
Joanne Higgins Leslie  
Anne L. MacArthur\* (L)  
Michael R. Mannan  
Susan Elaine Mayes  
Liam E. McGee  
1980  
Joseph Bainton  
Murray M. Bankhead\* (L)  
Douglas H. Barker (L)  
Diane D. Barry  
William J. Bausasi  
Betsy Bentley  
Michael R. Bobbit  
Edward A. Bondy  
Michele Stahl Brady\* (L)  
David F. Buchanan  
Gregory A. Bullian  
George E. Calandri, D.D.S.  
William J. Dittus  
Lottie Ayala Dennis  
James K. Dodson\* (L)  
Pat W. Engel  
Kathleen Angelos Eno  
John Finerman, III  
Cynthia J. Glancy\* (L)  
Robert L. Fleischman  
Michael Goldstein\* (L)  
Ann Greenspan  
Don Grosvenger\* (L)  
Margaret E. Dostal  
James K. Dodson\* (L)  
Steven P. Datch\* (L, AD)  
Lottie Ayala Dennis  
James K. Dodson\* (L)  
Pat W. Engel  
Kathleen Angelos Eno  
John Finerman, III  
Cynthia J. Glancy\* (L)  
Robert L. Fleischman  
Michael Goldstein\* (L)  
Ann Greenspan  
Don Grosvenger\* (L)  
Margaret E. Dostal  
James K. Dodson\* (L)  
Steven P. Datch\* (L, AD)  
Lottie Ayala Dennis  
James K. Dodson\* (L)  
Pat W. Engel  
Kathleen Angelos Eno  
John Finerman, III  
Cynthia J. Glancy\* (L)  
Robert L. Fleischman  
Michael Goldstein\* (L)  
Ann Greenspan  
Don Grosvenger\* (L)  
Margaret E. Dostal  
James K. Dodson\* (L)  
Steven P. Datch\* (L, AD)  
Lottie Ayala Dennis  
James K. Dodson\* (L)  
Pat W. Engel  
Kathleen Angelos Eno  
John Finerman, III  
Cynthia J. Glancy\* (L)  
Robert L. Fleischman  
Michael Goldstein\* (L)  
Ann Greenspan  
Don Grosvenger\* (L)  
Margaret E. Dostal  
James K. Dodson\* (L)  
Steven P. Datch\* (L, AD)  
Lottie Ayala Dennis  
James K. Dodson\* (L)  
Pat W. Engel  
Kathleen Angelos Eno  
John Finerman, III  
Cynthia J. Glancy\* (L)  
Robert L. Fleischman  
Michael Goldstein\* (L)  
Ann Greenspan  
Don Grosvenger\* (L)  
Margaret E. Dostal  
James K. Dodson\* (L)  
Steven P. Datch\* (L, AD)  
Lottie Ayala Dennis  
James K. Dodson\* (L)  
Pat W. Engel  
Kathleen Angelos Eno  
John Finerman, III  
Cynthia J. Glancy\* (L)  
Robert L. Fleischman  
Michael Goldstein\* (L)  
Ann Greenspan  
Don Grosvenger\* (L)  
Margaret E. Dostal  
James K. Dodson\* (L)  
Steven P. Datch\* (L, AD)  
Lottie Ayala Dennis  
James K. Dodson\* (L)  
Pat W. Engel  
Kathleen Angelos Eno  
John Finerman, III  
Cynthia J. Glancy\* (L)  
Robert L. Fleischman  
Michael Goldstein\* (L)  
Ann Greenspan  
Don Grosvenger\* (L)  
Margaret E. Dostal  
James K. Dodson\* (L)  
Steven P. Datch\* (L, AD)  
Lottie Ayala Dennis  
James K. Dodson\* (L)  
Pat W. Engel  
Kathleen Angelos Eno  
John Finerman, III  
Cynthia J. Glancy\* (L)  
Robert L. Fleischman  
Michael Goldstein\* (L)  
Ann Greenspan  
Don Grosvenger\* (L)  
Margaret E. Dostal  
James K. Dodson\* (L)  
Steven P. Datch\* (L, AD)  
Lottie Ayala Dennis  
James K. Dodson\* (L)  
Pat W. Engel  
Kathleen Angelos Eno  
John Finerman, III  
Cynthia J. Glancy\* (L)  
Robert L. Fleischman  
Michael Goldstein\* (L)  
Ann Greenspan  
Don Grosvenger\* (L)  
Margaret E. Dostal  
James K. Dodson\* (L)  
Steven P. Datch\* (L, AD)  
Lottie Ayala Dennis  
James K. Dodson\* (L)  
Pat W. Engel  
Kathleen Angelos Eno  
John Finerman, III  
Cynthia J. Glancy\* (L)  
Robert L. Fleischman  
Michael Goldstein\* (L)  
Ann Greenspan  
Don Grosvenger\* (L)  
Margaret E. Dostal  
James K. Dodson\* (L)  
Steven P. Datch\* (L, AD)  
Lottie Ayala Dennis  
James K. Dodson\* (L)  
Pat W. Engel  
Kathleen Angelos Eno  
John Finerman, III  
Cynthia J. Glancy\* (L)  
Robert L. Fleischman  
Michael Goldstein\* (L)  
Ann Greenspan  
Don Grosvenger\* (L)  
Margaret E. Dostal  
James K. Dodson\* (L)  
Steven P. Datch\* (L, AD)  
Lottie Ayala Dennis  
James K. Dodson\* (L)  
Pat W. Engel  
Kathleen Angelos Eno  
John Finerman, III  
Cynthia J. Glancy\* (L)  
Robert L. Fleischman  
Michael Goldstein\* (L)  
Ann Greenspan  
Don Grosvenger\* (L)  
Margaret E. Dostal  
James K. Dodson\* (L)  
Steven P. Datch\* (L, AD)  
Lottie Ayala Dennis  
James K. Dodson\* (L)  
Pat W. Engel  
Kathleen Angelos Eno  
John Finerman, III  
Cynthia J. Glancy\* (L)  
Robert L. Fleischman  
Michael Goldstein\* (L)  
Ann Greenspan  
Don Grosvenger\* (L)  
Margaret E. Dostal  
James K. Dodson\* (L)  
Steven P. Datch\* (L, AD)  
Lottie Ayala Dennis  
James K. Dodson\* (L)  
Pat W. Engel  
Kathleen Angelos Eno  
John Finerman, III  
Cynthia J. Glancy\* (L)  
Robert L. Fleischman  
Michael Goldstein\* (L)  
Ann Greenspan  
Don Grosvenger\* (L)  
Margaret E. Dostal  
James K. Dodson\* (L)  
Steven P. Datch\* (L, AD)  
Lottie Ayala Dennis  
James K. Dodson\* (L)  
Pat W. Engel  
Kathleen Angelos Eno  
John Finerman, III  
Cynthia J. Glancy\* (L)  
Robert L. Fleischman  
Michael Goldstein\* (L)  
Ann Greenspan  
Don Grosvenger\* (L)  
Margaret E. Dostal  
James K. Dodson\* (L)  
Steven P. Datch\* (L, AD)  
Lottie Ayala Dennis  
James K. Dodson\* (L)  
Pat W. Engel  
Kathleen Angelos Eno  
John Finerman, III  
Cynthia J. Glancy\* (L)  
Robert L. Fleischman  
Michael Goldstein\* (L)  
Ann Greenspan  
Don Grosvenger\* (L)  
Margaret E. Dostal  
James K. Dodson\* (L)  
Steven P. Datch\* (L, AD)  
Lottie Ayala Dennis  
James K. Dodson\* (L)  
Pat W. Engel  
Kathleen Angelos Eno  
John Finerman, III  
Cynthia J. Glancy\* (L)  
Robert L. Fleischman  
Michael Goldstein\* (L)  
Ann Greenspan  
Don Grosvenger\* (L)  
Margaret E. Dostal  
James K. Dodson\* (L)  
Steven P. Datch\* (L, AD)  
Lottie Ayala Dennis  
James K. Dodson\* (L)  
Pat W. Engel  
Kathleen Angelos Eno  
John Finerman, III  
Cynthia J. Glancy\* (L)  
Robert L. Fleischman  
Michael Goldstein\* (L)  
Ann Greenspan  
Don Grosvenger\* (L)  
Margaret E. Dostal  
James K. Dodson\* (L)  
Steven P. Datch\* (L, AD)  
Lottie Ayala Dennis  
James K. Dodson\* (L)  
Pat W. Engel  
Kathleen Angelos Eno  
John Finerman, III  
Cynthia J. Glancy\* (L)  
Robert L. Fleischman  
Michael Goldstein\* (L)  
Ann Greenspan  
Don Grosvenger\* (L)  
Margaret E. Dostal  
James K. Dodson\* (L)  
Steven P. Datch\* (L, AD)  
Lottie Ayala Dennis  
James K. Dodson\* (L)  
Pat W. Engel  
Kathleen Angelos Eno  
John Finerman, III  
Cynthia J. Glancy\* (L)  
Robert L. Fleischman  
Michael Goldstein\* (L)  
Ann Greenspan  
Don Grosvenger\* (L)  
Margaret E. Dostal  
James K. Dodson\* (L)  
Steven P. Datch\* (L, AD)  
Lottie Ayala Dennis  
James K. Dodson\* (L)  
Pat W. Engel  
Kathleen Angelos Eno  
John Finerman, III  
Cynthia J. Glancy\* (L)  
Robert L. Fleischman  
Michael Goldstein\* (L)  
Ann Greenspan  
Don Grosvenger\* (L)  
Margaret E. Dostal  
James K. Dodson\* (L)  
Steven P. Datch\* (L, AD)  
Lottie Ayala Dennis  
James K. Dodson\* (L)  
Pat W. Engel  
Kathleen Angelos Eno  
John Finerman, III  
Cynthia J. Glancy\* (L)  
Robert L. Fleischman  
Michael Goldstein\* (L)  
Ann Greenspan  
Don Grosvenger\* (L)  
Margaret E. Dostal  
James K. Dodson\* (L)  
Steven P. Datch\* (L, AD)  
Lottie Ayala Dennis  
James K. Dodson\* (L)  
Pat W. Engel  
Kathleen Angelos Eno  
John Finerman, III  
Cynthia J. Glancy\* (L)  
Robert L. Fleischman  
Michael Goldstein\* (L)  
Ann Greenspan  
Don Grosvenger\* (L)  
Margaret E. Dostal  
James K. Dodson\* (L)  
Steven P. Datch\* (L, AD)  
Lottie Ayala Dennis  
James K. Dodson\* (L)  
Pat W. Engel  
Kathleen Angelos Eno  
John Finerman, III  
Cynthia J. Glancy\* (L)  
Robert L. Fleischman  
Michael Goldstein\* (L)  
Ann Greenspan  
Don Grosvenger\* (L)  
Margaret E. Dostal  
James K. Dodson\* (L)  
Steven P. Datch\* (L, AD)  
Lottie Ayala Dennis  
James K. Dodson\* (L)  
Pat W. Engel  
Kathleen Angelos Eno  
John Finerman, III  
Cynthia J. Glancy\* (L)  
Robert L. Fleischman  
Michael Goldstein\* (L)  
Ann Greenspan  
Don Grosvenger\* (L)  
Margaret E. Dostal  
James K. Dodson\* (L)  
Steven P. Datch\* (L, AD)  
Lottie Ayala Dennis  
James K. Dodson\* (L)  
Pat W. Engel  
Kathleen Angelos Eno  
John Finerman, III  
Cynthia J. Glancy\* (L)  
Robert L. Fleischman  
Michael Goldstein\* (L)  
Ann Greenspan  
Don Grosvenger\* (L)  
Margaret E. Dostal  
James K. Dodson\* (L)  
Steven P. Datch\* (L, AD)  
Lottie Ayala Dennis  
James K. Dodson\* (L)  
Pat W. Engel  
Kathleen Angelos Eno  
John Finerman, III  
Cynthia J. Glancy\* (L)  
Robert L. Fleischman  
Michael Goldstein\* (L)  
Ann Greenspan  
Don Grosvenger\* (L)  
Margaret E. Dostal  
James K. Dodson\* (L)  
Steven P. Datch\* (L, AD)  
Lottie Ayala Dennis  
James K. Dodson\* (L)  
Pat W. Engel  
Kathleen Angelos Eno  
John Finerman, III  
Cynthia J. Glancy\* (L)  
Robert L. Fleischman  
Michael Goldstein\* (L)  
Ann Greenspan  
Don Grosvenger\* (L)  
Margaret E. Dostal  
James K. Dodson\* (L)  
Steven P. Datch\* (L, AD)  
Lottie Ayala Dennis  
James K. Dodson\* (L)  
Pat W. Engel  
Kathleen Angelos Eno  
John Finerman, III  
Cynthia J. Glancy\* (L)  
Robert L. Fleischman  
Michael Goldstein\* (L)  
Ann Greenspan  
Don Grosvenger\* (L)  
Margaret E. Dostal  
James K. Dodson\* (L)  
Steven P. Datch\* (L, AD)  
Lottie Ayala Dennis  
James K. Dodson\* (L)  
Pat W. Engel  
Kathleen Angelos Eno  
John Finerman, III  
Cynthia J. Glancy\* (L)  
Robert L. Fleischman  
Michael Goldstein\* (L)  
Ann Greenspan  
Don Grosvenger\* (L)  
Margaret E. Dostal  
James K. Dodson\* (L)  
Steven P. Datch\* (L, AD)  
Lottie Ayala Dennis  
James K. Dodson\* (L)  
Pat W. Engel  
Kathleen Angelos Eno  
John Finerman, III  
Cynthia J. Glancy\* (L)  
Robert L. Fleischman  
Michael Goldstein\* (L)  
Ann Greenspan  
Don Grosvenger\* (L)  
Margaret E. Dostal  
James K. Dodson\* (L)  
Steven P. Datch\* (L, AD)  
Lottie Ayala Dennis  
James K. Dodson\* (L)  
Pat W. Engel  
Kathleen Angelos Eno  
John Finerman, III  
Cynthia J. Glancy\* (L)  
Robert L. Fleischman  
Michael Goldstein\* (L)  
Ann Greenspan  
Don Grosvenger\* (L)  
Margaret E. Dostal  
James K. Dodson\* (L)  
Steven P. Datch\* (L, AD)  
Lottie Ayala Dennis  
James K. Dodson\* (L)  
Pat W. Engel  
Kathleen Angelos Eno  
John Finerman, III  
Cynthia J. Glancy\* (L)  
Robert L. Fleischman  
Michael Goldstein\* (L)  
Ann Greenspan  
Don Grosvenger\* (L)  
Margaret E. Dostal  
James K. Dodson\* (L)  
Steven P. Datch\* (L, AD)  
Lottie Ayala Dennis  
James K. Dodson\* (L)  
Pat W. Engel  
Kathleen Angelos Eno  
John Finerman, III  
Cynthia J. Glancy\* (L)  
Robert L. Fleischman  
Michael Goldstein\* (L)  
Ann Greenspan  
Don Grosvenger\* (L)  
Margaret E. Dostal  
James K. Dodson\* (L)  
Steven P. Datch\* (L, AD)  
Lottie Ayala Dennis  
James K. Dodson\* (L)  
Pat W. Engel  
Kathleen Angelos Eno  
John Finerman, III  
Cynthia J. Glancy\* (L)  
Robert L. Fleischman  
Michael Goldstein\* (L)  
Ann Greenspan  
Don Grosvenger\* (L)  
Margaret E. Dostal  
James K. Dodson\* (L)  
Steven P. Datch\* (L, AD)  
Lottie Ayala Dennis  
James K. Dodson\* (L)  
Pat W. Engel  
Kathleen Angelos Eno  
John Finerman, III  
Cynthia J. Glancy\* (L)  
Robert L. Fleischman  
Michael Goldstein\* (L)  
Ann Greenspan  
Don Grosvenger\* (L)  
Margaret E. Dostal  
James K. Dodson\* (L)  
Steven P. Datch\* (L, AD)  
Lottie Ayala Dennis  
James K. Dodson\* (L)  
Pat W. Engel  
Kathleen Angelos Eno  
John Finerman, III  
Cynthia J. Glancy\* (L)  
Robert L. Fleischman  
Michael Goldstein\* (L)  
Ann Greenspan  
Don Grosvenger\* (L)  
Margaret E. Dostal  
James K. Dodson\* (L)  
Steven P. Datch\* (L, AD)  
Lottie Ayala Dennis  
James K. Dodson\* (L)  
Pat W. Engel  
Kathleen Angelos Eno  
John Finerman, III  
Cynthia J. Glancy\* (L)  
Robert L. Fleischman  
Michael Goldstein\* (L)  
Ann Greenspan  
Don Grosvenger\* (L)  
Margaret E. Dostal  
James K. Dodson\* (L)  
Steven P. Datch\* (L, AD)  
Lottie Ayala Dennis  
James K. Dodson\* (L)  
Pat W. Engel  
Kathleen Angelos Eno  
John Finerman, III  
Cynthia J. Glancy\* (L)  
Robert L. Fleischman  
Michael Goldstein\* (L)  
Ann Greenspan  
Don Grosvenger\* (L)  
Margaret E. Dostal  
James K. Dodson\* (L)  
Steven P. Datch\* (L, AD)  
Lottie Ayala Dennis  
James K. Dodson\* (L)  
Pat W. Engel  
Kathleen Angelos Eno  
John Finerman, III  
Cynthia J. Glancy\* (L)  
Robert L. Fleischman  
Michael Goldstein\* (L)  
Ann Greenspan  
Don Grosvenger\* (L)  
Margaret E. Dostal  
James K. Dodson\* (L)  
Steven P. Datch\* (L, AD)  
Lottie Ayala Dennis  
James K. Dodson\* (L)  
Pat W. Engel  
Kathleen Angelos Eno  
John Finerman, III  
Cynthia J. Glancy\* (L)  
Robert L. Fleischman  
Michael Goldstein\* (L)  
Ann Greenspan  
Don Grosvenger\* (L)  
Margaret E. Dostal  
James K. Dodson\* (L)  
Steven P. Datch\* (L, AD)  
Lottie Ayala Dennis  
James K. Dodson\* (L)  
Pat W. Engel  
Kathleen Angelos Eno  
John Finerman, III  
Cynthia J. Glancy\* (L)  
Robert L. Fleischman  
Michael Goldstein\* (L)  
Ann Greenspan  
Don Grosvenger\* (L)  
Margaret E. Dostal  
James K. Dodson\* (L)  
Steven P. Datch\* (L, AD)  
Lottie Ayala Dennis  
James K. Dodson\* (L)  
Pat W. Engel  
Kathleen Angelos Eno  
John Finerman, III  
Cynthia J. Glancy\* (L)  
Robert L. Fleischman  
Michael Goldstein\* (L)  
Ann Greenspan  
Don Grosvenger\* (L)  
Margaret E. Dostal  
James K. Dodson\* (L)  
Steven P. Datch\* (L, AD)  
Lottie Ayala Dennis  
James K. Dodson\* (L)  
Pat W. Engel  
Kathleen Angelos Eno  
John Finerman, III  
Cynthia J. Glancy\* (L)  
Robert L. Fleischman  
Michael Goldstein\* (L)  
Ann Greenspan  
Don Grosvenger\* (L)  
Margaret E. Dostal  
James K. Dodson\* (L)  
Steven P. Datch\* (L, AD)  
Lottie Ayala Dennis  
James K. Dodson\* (L)  
Pat W. Engel  
Kathleen Angelos Eno  
John Finerman, III  
Cynthia J. Glancy\* (L)  
Robert L. Fleischman  
Michael Goldstein\* (L)  
Ann Greenspan  
Don Grosvenger\* (L)  
Margaret E. Dostal  
James K. Dodson\* (L)  
Steven P. Datch\* (L, AD)  
Lottie Ayala Dennis  
James K. Dodson\* (L)  
Pat W. Engel  
Kathleen Angelos Eno  
John Finerman, III  
Cynthia J. Glancy\* (L)  
Robert L. Fleischman  
Michael Goldstein\* (L)  
Ann Greenspan  
Don Grosvenger\* (L)  
Margaret E. Dostal  
James K. Dodson\* (L)  
Steven P. Datch\* (L, AD)  
Lottie Ayala Dennis  
James K. Dodson\* (L)  
Pat W. Engel  
Kathleen Angelos Eno  
John Finerman, III  
Cynthia J. Glancy\* (L)  
Robert L. Fleischman  
Michael Goldstein\* (L)  
Ann Greenspan  
Don Grosvenger\* (L)  
Margaret E. Dostal  
James K. Dodson\* (L)  
Steven P. Datch\* (L, AD)  
Lottie Ayala Dennis  
James K. Dodson\* (L)  
Pat W. Engel  
Kathleen Angelos Eno  
John Finerman, III  
Cynthia J. Glancy\* (L)  
Robert L. Fleischman  
Michael Goldstein\* (L)  
Ann Greenspan  
Don Grosvenger\* (L)  
Margaret E. Dostal  
James K. Dodson\* (L)  
Steven P. Datch\* (L, AD)  
Lottie Ayala Dennis  
James K. Dodson\* (L)  
Pat W. Engel  
Kathleen Angelos Eno  
John Finerman, III  
Cynthia J. Glancy\* (L)  
Robert L. Fleischman  
Michael Goldstein\* (L)  
Ann Greenspan  
Don Grosvenger\* (L)  
Margaret E. Dostal  
James K. Dodson\* (L)  
Steven P. Datch\* (L, AD)  
Lottie Ayala Dennis  
James K. Dodson\* (L)  
Pat W. Engel  
Kathleen Angelos Eno  
John Finerman, III  
Cynthia J. Glancy\* (L)  
Robert L. Fleischman  
Michael Goldstein\* (L)  
Ann Greenspan  
Don Grosvenger\* (L)  
Margaret E. Dostal  
James K. Dodson\* (L)  
Steven P. Datch\* (L, AD)  
Lottie Ayala Dennis  
James K. Dodson\* (L)  
Pat W. Engel  
Kathleen Angelos Eno  
John Finerman, III  
Cynthia J. Glancy\* (L)  
Robert L. Fleischman  
Michael Goldstein\* (L)  
Ann Greenspan  
Don Grosvenger\* (L)  
Margaret E. Dostal  
James K. Dodson\* (L)  
Steven P. Datch\* (L, AD)  
Lottie Ayala Dennis  
James K. Dodson\* (L)  
Pat W. Engel  
Kathleen Angelos Eno  
John Finerman, III  
Cynthia J. Glancy\* (L)  
Robert L. Fleischman  
Michael Goldstein\* (L)  
Ann Greenspan  
Don Grosvenger\* (L)  
Margaret E. Dostal  
James K. Dodson\* (L)  
Steven P. Datch\* (L, AD)  
Lottie Ayala Dennis  
James K. Dodson\* (L)  
Pat W. Engel  
Kathleen Angelos Eno  
John Finerman, III  
Cynthia J. Glancy\* (L)  
Robert L. Fleischman  
Michael Goldstein\* (L)  
Ann Greenspan  
Don Grosvenger\* (L)  
Margaret E. Dostal  
James K. Dodson\* (L)  
Steven P. Datch\* (L, AD)  
Lottie Ayala Dennis  
James K. Dodson\* (L)  
Pat W. Engel  
Kathleen Angelos Eno  
John Finerman, III  
Cynthia J. Glancy\* (L)  
Robert L. Fleischman  
Michael Goldstein\* (L)  
Ann Greenspan  
Don Grosvenger\* (L)  
Margaret E. Dostal  
James K. Dodson\* (L)  
Steven P. Datch\* (L, AD)  
Lottie Ayala Dennis  
James K. Dodson\* (L)  
Pat W. Engel  
Kathleen Angelos Eno  
John Finerman, III  
Cynthia J. Glancy\* (L)  
Robert L. Fleischman  
Michael Goldstein\* (L)  
Ann Greenspan  
Don Grosvenger\* (L)  
Margaret E. Dostal  
James K. Dodson\* (L)  
Steven P. Datch\* (L, AD)  
Lottie Ayala Dennis  
James K. Dodson\* (L)  
Pat W. Engel  
Kathleen Angelos Eno  
John Finerman, III  
Cynthia J. Glancy\* (L)  
Robert L. Fleischman  
Michael Goldstein\* (L)  
Ann Greenspan  
Don Grosvenger\* (L)  
Margaret E. Dostal  
James K. Dodson\* (L)  
Steven P. Datch\* (L, AD)  
Lottie Ayala Dennis  
James K. Dodson\* (L)  
Pat W. Engel  
Kathleen Angelos Eno  
John Finerman, III  
Cynthia J. Glancy\* (L)  
Robert L. Fleischman  
Michael Goldstein\* (L)  
Ann Greenspan  
Don Grosvenger\* (L)  
Margaret E. Dostal  
James K. Dodson\* (L)  
Steven P. Datch\* (L, AD)  
Lottie Ayala Dennis  
James K. Dodson\* (L)  
Pat W. Engel  
Kathleen Angelos Eno  
John Finerman, III  
Cynthia J. Glancy\* (L)  
Robert L. Fleischman  
Michael Goldstein\* (L)  
Ann Greenspan  
Don Grosvenger\* (L)  
Margaret E. Dostal  
James K. Dodson\* (L)  
Steven P. Datch\* (L, AD)  
Lottie Ayala Dennis  
James K. Dodson\* (L)  
Pat W. Engel  
Kathleen Angelos Eno  
John Finerman, III  
Cynthia J. Glancy\* (L)  
Robert L. Fleischman  
Michael Goldstein\* (L)  
Ann Greenspan  
Don Grosvenger\* (L)  
Margaret E. Dostal  
James K. Dodson\* (L)  
Steven P. Datch\* (L, AD)  
Lottie Ayala Dennis  
James K. Dodson\* (L)  
Pat W. Engel  
Kathleen Angelos Eno  
John Finerman, III  
Cynthia J. Glancy\* (L)  
Robert L. Fleischman  
Michael Goldstein\* (L)  
Ann Greenspan  
Don Grosvenger\* (L)  
Margaret E. Dostal  
James K. Dodson\* (L)  
Steven P. Datch\* (L, AD)  
Lottie Ayala Dennis  
James K. Dodson\* (L)  
Pat W. Engel  
Kathleen Angelos Eno  
John Finerman, III  
Cynthia J. Glancy\* (L)  
Robert L. Fleischman  
Michael Goldstein\* (L)  
Ann Greenspan  
Don Grosvenger\* (L)  
Margaret E. Dostal  
James K. Dodson\* (L)  
Steven P. Datch\* (L, AD)  
Lottie Ayala Dennis  
James K. Dodson\* (L)  
Pat W. Engel  
Kathleen Angelos Eno  
John Finerman, III  
Cynthia J. Glancy\* (L)  
Robert L. Fleischman  
Michael Goldstein\* (L)  
Ann Greenspan  
Don Grosvenger\* (L)  
Margaret E. Dostal  
James K. Dodson\* (L)  
Steven P. Datch\* (L, AD)  
Lottie Ayala Dennis  
James K. Dodson\* (L)  
Pat W. Engel  
Kathleen Angelos Eno  
John Finerman, III  
Cynthia J. Glancy\* (L)  
Robert L. Fleischman  
Michael Goldstein\* (L)  
Ann Greenspan  
Don Grosvenger\* (L)  
Margaret E. Dostal  
James K. Dodson\* (L)  
Steven P. Datch\* (L, AD)  
Lottie Ayala Dennis  
James K. Dodson\* (L)  
Pat W. Engel  
Kathleen Angelos Eno  
John Finerman, III  
Cynthia J. Glancy\* (L)  
Robert L. Fleischman  
Michael Goldstein\* (L)  
Ann Greenspan  
Don Grosvenger\* (L)  
Margaret E. Dostal  
James K. Dodson\* (L)  
Steven P. Datch\* (L, AD)  
Lottie Ayala Dennis  
James K. Dodson\* (L)  
Pat W. Engel  
Kathleen Angelos Eno  
John Finerman, III  
Cynthia J. Glancy\* (L)  
Robert L. Fleischman  
Michael Goldstein\* (L)  
Ann Greenspan  
Don Grosvenger\* (L)  
Margaret E. Dostal  
James K. Dodson\* (L)  
Steven P. Datch\* (L, AD)  
Lottie Ayala Dennis  
James K. Dodson\* (L)  
Pat W. Engel  
Kathleen Angelos Eno  
John Finerman, III  
Cynthia J. Glancy\* (L)  
Robert L. Fleischman  
Michael Goldstein\* (L)  
Ann Greenspan  
Don Grosvenger\* (L)  
Margaret E. Dostal  
James K. Dodson\* (L)  
Steven P. Datch\* (L, AD)  
Lottie Ayala Dennis  
James K. Dodson\* (L)  
Pat W. Engel  
Kathleen Angelos Eno  
John Finerman, III  
Cynthia J. Glancy\* (L)  
Robert L. Fleischman  
Michael Goldstein\* (L)  
Ann Greenspan  
Don Grosvenger\* (L)  
Margaret E. Dostal  
James K. Dodson\* (L)  
Steven P. Datch\* (L, AD)  
Lottie Ayala Dennis  
James K. Dodson\* (L)  
Pat W. Engel  
Kathleen Angelos Eno  
John Finerman, III  
Cynthia J. Glancy\* (L)  
Robert L. Fleischman  
Michael Goldstein\* (L)  
Ann Greenspan  
Don Grosvenger\* (L)  
Margaret E. Dostal  
James K. Dodson\* (L)  
Steven P. Datch\* (L, AD)  
Lottie Ayala Dennis  
James K. Dodson\* (L)  
Pat W. Engel  
Kathleen Angelos Eno  
John Finerman, III  
Cynthia J. Glancy\* (L)  
Robert L. Fleischman  
Michael Goldstein\* (L)  
Ann Greenspan  
Don Grosvenger\* (L)  
Margaret E. Dostal  
James K. Dodson\* (L)  
Steven P. Datch\* (L, AD)  
Lottie Ayala Dennis  
James K. Dodson\* (L)  
Pat W. Engel  
Kathleen Angelos Eno  
John Finerman, III  
Cynthia J. Glancy\* (L)  
Robert L. Fleischman  
Michael Goldstein\* (L)  
Ann Greenspan  
Don Grosvenger\* (L)  
Margaret E.



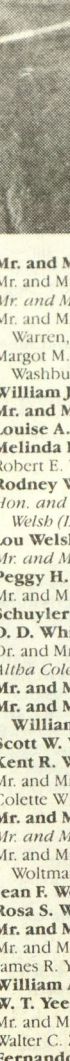
## Page 10

Ferguson (L)  
Henry T. Fisher (AS)  
Mr. and Mrs. David Fritz (AS)  
**John Fleck**  
Mr. and Mrs. David G. Fletcher (L)  
Mr. and Mrs. Kim F. Fleet (PC)  
Mr. and Mrs. Robert E. Floss (PC)  
Mr. and Mrs. Norman C. Fong  
**Brian R. Forsyth (L)**  
**Robert B. Foster**  
Fr. Patrick Fox  
Mr. and Mrs. John H. Foster  
Frazee (PC)  
**Christophe J. Freed**  
Miff Freeman (L)  
William Freeman (L, AD)  
**Robert B. French (L)**  
Mr. and Mrs. C. E. Frain (PC)  
Mr. and Mrs. F. F. Fray  
**Gary Funakoshi (AS)**  
Timothy Furlong  
**Prof. and Mrs. George Gafford**  
Robert R. Gagnier (L)  
**Hugh S. Gamble, Jr. (AS)**  
Mr. and Mrs. Harry L. Gardner  
**Jayne Garland (L)**  
Mr. and Mrs. Albert Gaurvin  
Mr. and Mrs. Saul B. Gealer (L)  
**E. Michael Geddes**  
Mr. and Mrs. Henry R. Gerard  
Bryan R. Gerlach (L)  
Mr. and Mrs. Anthony Ghio (PC)  
Mr. and Mrs. Fred W. Gilbert (L)  
**Theodore E. Gildard**  
Diane M. Gid  
Judge and Mrs. David Gilman (L)  
Mr. and Mrs. Philip Gilligan (PC)  
Mr. and Mrs. J. L. Gilman  
**William F. Gilmore (PC)**  
Mr. and Mrs. Martin L. Gleich (PC)  
*Varibha Galen*  
**Charles E. Giesel**  
Mr. and Mrs. Robert M.  
Golden (PC)  
Leo Gonzalez Jr.  
Mr. and Mrs. James J. Goodrich  
Mrs. Murray J. Goodman  
**Martha L. Goodwin**  
**Rosemary T. Goodyear**  
Raymond Gordon (L)  
Mr. and Mrs. Charles M.  
Grace (PC, L)  
**Edythe M. Grant**  
Mr. and Mrs. Robert H. Grant  
**Thomas B. Grand**  
Mr. and Mrs. E. T. Gravette, Jr.  
Monique Gray  
Mr. and Mrs. Donald  
Grondin,  
Mr. and Mrs. Alfred Grossman  
**Hortense Gruber (L)**  
**C. Amerie Hadley (L)**  
Mr. and Mrs. Robert H. Hahn (PC)  
Mr. and Mrs. Gary Hahn  
Mr. and Mrs. Ronald Hahn  
**Charles L. Haines (L)**  
Harold Woodland Haines  
Mr. and Mrs. Robert C.  
Harbo  
**Jack D. Harby**  
**Karlheide Hardie**  
Mr. and Mrs. George C. Harper  
Mr. and Mrs. Emmett S.  
Harrington (PC)  
**Janet K. Harrison**  
Mr. and Mrs. Larry D. Hartwig (PC)  
Mr. and Mrs. E. Miles  
Hartwig (L)  
**Sinclair Hays, Jr. (L)**  
Joseph Hauber (PC)  
Mr. and Mrs. Lester A. Haug (L)  
Hawthorne (L)  
**Be-thorpe (PC)**  
Mr. and Mrs. Lester Hayes (L)  
**Bill Heath (AS)**  
Mr. and Mrs. Leon L.  
**Hedgcock (PC)**  
**Kathryn A. Heid**  
Mr. and Mrs. L. T. Helmscher  
**Wesley Hepler (L)**  
**Gary Herbert (AS)**  
Philip Herf  
**Eleanor B. Herzman**  
Mr. and Mrs. Joseph W.  
Hickley (PC)  
Mr. and Mrs. Peter Hillsbrecht  
Mr. and Mrs. Joseph Hoffman  
**Eleanor A. Holmes**  
Mr. and Mrs. E. L. Hope (St. PC)  
Mr. and Mrs. L. H. Horton  
**Thomas M. Howell**  
Mr. and Mrs. W. George Hubbard  
**Wesley Hughes (L)**  
Mr. and Mrs. Ray C. Huff  
Mr. and Mrs. Burton Hubben (AS)  
Dr. C. C. Huhn  
Mr. and Mrs. Bruce Huysack (L)  
**C. M. Hwang**  
Mr. and Mrs. John J. Jachym (PC)  
Mr. and Mrs. Edward Jachym  
James J. Jaffe (L)  
Mr. and Mrs. Oliver B. James  
**Dr. Charles E. Jamison, Jr.**  
*Mrs. Hilbert W. Jamison*  
Mr. and Mrs. Ronald J. Johnson  
Mr. and Mrs. F. C. Johnson (AS)  
Mr. and Mrs. Keith A. Johnson  
Mr. and Mrs. J. Jorgensen  
Jerald L. Katelman  
Miriam S. Kaufman (L)  
**Mr. and Mrs. David A. Kay (L)**  
**William Keck (L)**  
**Kazmarek (PC)**  
Mr. and Mrs. Edward T.  
*Keating (PC)*  
Mrs. Thomas E. Keckin (AS)  
Mr. and Mrs. Edmund L.  
Keckey (PC)  
Mr. and Mrs. Victor Kellar  
**William Kellner (L)**  
Martha A. Kennedy  
Dwan V. Keng (L)  
Mr. and Mrs. Thomas E. Kern (PC)  
Mr. and Mrs. Katherine Kern  
Mr. and Mrs. Taqif N. Khoury (PC)  
Mr. and Mrs. Richard L. Kintz  
**W. A. Kjos, Jr.**  
Mr. and Mrs. Eugene V. Klein (PC)  
Nell J. Knodel  
**Richard R. Koch (L)**  
Mr. and Mrs. John J. Konyon  
**William K. Kopp (L)**  
**Gregory L. Korth**  
Mr. and Mrs. Victor J. Korth  
Mr. and Mrs. Elmer F. Kosen  
**Bessie E. Kotzin**  
Mr. and Mrs. Roman J.  
**Kownacki**  
Sheldon Kram (L, AD)  
*Joan B. Kroe*  
Mr. and Mrs. Victor H. Krulak  
Mr. and Mrs. John O. Lalas  
**George F. Larchmill**  
Mr. and Mrs. Ralph Larsen (L)  
**John C. Lauer (L)**  
Mr. and Mrs. Joseph F. Laurent  
Jeanne and Larry Lawrence  
IPC

**Rod Le Gate**  
Dr. Mrs. Charles P. LeGault (L, AD)  
Mr. M. Denise LeGault  
Mrs. and Mrs. G. Emerson  
Larsen (AS)  
Ironical Ice  
Harold Leiber  
Mrs. J. Lessard  
Dr. and Mrs. Stanley Levy  
Stuart J. Levy (L, AD)  
Robert F. Lewis (L, L)  
Dolores A. M. Limpus  
Mrs. Edgar L. Lohr  
Cary Litherland (L)  
Jack Littlejohn  
Mrs. and Mrs. Angel  
Lombardo (AS)  
Dr. Gary M. Losse  
Elizabeth Lucas (L)  
Mrs. Edgar L. Lohr  
Marie A. Lühr  
Mr. and Mrs. Louis R. Lund  
Mr. and Mrs. Arnis V. Luters  
Lumina  
David L. Lynn  
Fred MacMillan (AS)  
Mr. and Mrs. Donald M. Macke  
Mackay (L)  
Patrick's Mabel  
Mrs. and Mrs. John J. Malkind (L)  
Timothy May  
Julie Marie Maloy  
Mr. and Mrs. Douglas F.  
Manchester (PC)  
Joseph P. Manzo (L)  
Gilbert Mar  
Mr. and Mrs. John A. Martes  
K. L. Martin  
James D. Marton (AS)  
Mr. and Mrs. John J. Massart (AS)  
Dr. T. Mathews  
Jean Mathieu  
Dr. and Mrs. David A. Mathison  
Mr. and Mrs. Glibo R. Matta  
Willard L. Matteson  
Dr. and Mrs. Peter J.  
Matus (L)  
Mr. and Mrs. Malcolm E. Mayorga  
R. R. McAuley  
Mrs. Justin M. McCarthy  
Mrs. and Mrs. Evelyn McCain  
Mr. and Mrs. John McChernd (L)  
Jamie McDonald  
Mr. and Mrs. Daniel J. McGinnis  
McIntosh  
R. Alim. and Mrs. Rob McGreger  
Dr. and Mrs. Roger D. McKenna  
Marlene McKenney  
Andrew McKenighin  
Robert A. McKeon (AS)  
John K. McNulty (L)  
J. W. McNetter  
Mr. and Mrs. Thomas Metzger (L)  
Jane K. Meyers (L)  
Mr. and Mrs. Edward R.  
Michelson  
Ivan Miller  
Erwin Millinet  
Mr. and Mrs. Thomas  
Minichell  
David T. Minney  
Dr. and Mrs. Andres Miyamoto  
Mrs. N. Mohr, M.D. (AD)  
Charles J. Molnar Jr.  
Stephen J. Montgomery (L)  
Mr. and Mrs. Kenneth E. Morgan  
Morgan  
Mr. and Mrs. Robert E. Morris  
Sara E. Moser (L)  
Robert Mosser  
Bob Moss  
Selma C. Mueller (L)  
Peter M. Mueller (AS)  
Wayne Mullins (L)  
Thomas E. Mullen (PC)  
Lewie C. Muller (L)  
Anne Marie Mulligan  
Mr. and Mrs. J. M.  
Mulvaney (L, MF)  
Mr. and Mrs. Jose E. Munoz  
Mrs. James Murphy  
Meyer, Susan Murray  
Helen J. Meyer  
Mr. and Mrs. Robert Myrick (L)  
Mr. and Mrs. Charles J. Nager, Jr.  
Mr. and Mrs. Thomas P. Napier  
Jeff M. Napp (L)  
Louis A. Narg  
James T. Napolitano  
George T. Napolitano  
Mr. and Alan Nevlin  
Michael A. Newhouse (L)  
Elizabeth S. Nichols  
Mr. and Mrs. Harold W.  
Nichols (PC)  
Mr. and Mrs. Peter Nicolfico (L)  
Mr. and Mrs. Dean N.  
Nimman  
Jerry L. Normal, III  
P. Frank Norton  
Mr. and Mrs. Ronald Nowak (AS)  
Stanley A. Nowak  
Kevin D. O'Brien  
Mr. and Mrs. Dennis G. O'Brien  
Mike O'Brien  
James T. O'Connor, Jr.  
Lawrence O'Rourke (L)  
Manuel Occiano (AS)  
Mr. and Mrs. Lincoln V. Okita  
William L. Olson  
Dr. and Mrs. David R. Olmick  
Kenneth E. Olson  
Dr. and Mrs. James B. Orwig  
Owen  
Michael N. Oxman (L)  
David Packard (PC)  
Mr. and Mrs. Thomas Palmer  
Mr. and Mrs. George M.  
Pardue (L)  
Parcell Patchen  
Mr. and Mrs. Joseph M. Patridge  
William L. Patton (L)  
Mr. and Mrs. L. Robert Payne  
Mr. and Mrs. Thomas R. Payne  
George Pecoraro (AS)  
A. J. Peracchi  
Mr. and Mrs. James Pernicano  
George A. Peterson (L)  
Gordon Peterson (L)  
Mr. and Mrs. Aubrey L.  
Pettit, Jr.  
J. Craig Pfaff (L)  
Taherah Pirhakkara  
Dr. and Mrs. J. A. Plazcek  
William R. Plourd  
Mr. and Mrs. Kenneth J. Poole  
Mr. and Mrs. Kenneth Poovey  
E. J. Poyner  
Bertha C. Potts  
James A. Powell  
Mr. and Mrs. Jack L. Powell (PC)  
Donald Pralle (L)  
Ronald Prast (AS)  
Ronald T. Prater  
Dr. and Mrs. David C. Pritchard  
Mr. and Mrs. Leland S. Pruska (L)



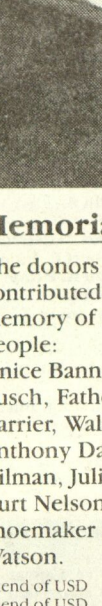
**Ray J. Ptak**  
**Mariano L. Pulli**  
**Joyce W. Quintana**  
**Cindy Ramatici (L)**  
**Fernando Ramirez, Jr.**  
**Guillermo Ramos**  
**Lorna P. Randolph (L)**  
**Mr. and Mrs. Gerry Ranglas**  
**Greg Hatch**  
**Mr. and Mrs. Abraham Ratner (AS)**  
**Mr. and Mrs. Edward C. Rea**  
**Mrs. Happy Redburn (PC)**  
**Mr. and Mrs. Lohar Reuss**  
**Frank Ribelin (PC)**  
**Dr. and Mrs. Vincent M. Ricciuti**  
**Dr. and Mrs. Dennis P. Riley**  
**Nancy T. Rinehart**  
**Mr. and Mrs. Harry S. Rinker**  
**Myr Kisher (L)**  
**Mr. and Mrs. Arthur Rivkin**  
**Mr. and Mrs. Kramer**  
**Rohlfisch (AS)**  
**Christy L. Rojas**  
**Mrs. Leo Roon (PC)**  
**Irma P. Rooney**  
**William J. Rooney**  
**John William Rose**  
**P. A. Roth, M.D.**  
**Harvey J. Royer (L)**  
**Robert I. Rubeshaw**  
**William P. Rusk**  
**H. G. Ryback**  
**Mr. and Mrs. Harold Sadler (PC)**  
**Patricia H. Saffian**  
**John Young Salmon (PC)**  
**Mr. and Mrs. Henry G. Sandvoss (AS)**  
**Mr. and Mrs. Joaquin Santalo**  
**Hein Santoro**  
**Fernande Sarfich**  
**Mr. and Mrs. Alphonso Sarno**  
**Mary R. Saunders (L)**  
**Dr. and Mrs. John D. Sawyer**  
**Mr. and Mrs. Donald Schall**  
**Mr. and Mrs. Peter R. Schipa**  
**Donna L. Schmitt**  
**William Schofield**  
**Dr. and Mrs. James B. Schultz**  
**Mr. and Mrs. Jerry Schumacher**  
**Mr. and Mrs. Wilson E. Schurr**  
**Michael A. Schwartz**  
**Steve Sciarra**  
**Joan Scott**  
**Mr. and Mrs. Fred Schenert**  
**Dr. and Mrs. John M. Seiber**  
**Louis N. Seitchik (L)**  
**Mrs. Frances L. Sellers**  
**Mr. and Mrs. Norman T. Seltzer**  
**Jane M. Sexton**  
**William and Mary Sexton (AS)**  
**Mr. and Mrs. R. E. Shepherd**  
**Mr. and Mrs. William P. Shine**  
**Mr. and Mrs. Edward G. Shoen**  
**Larry Showley**  
**Mr. and Mrs. Lon Showley**  
**Mr. and Mrs. Christopher**  
**Shum (PC)**  
**Mr. and Mrs. O. Morris Sievert (PC)**  
**Angus M. Simms (L)**  
**Charlotte Simonich**  
**Jack M. Skalla**  
**Francis M. Smith (L)**  
**Randolph Smith (L)**  
**Robert H. Smith**  
**Mrs. Franc A. Snodgrass, Sr. (AS)**  
**Herschel R. Snodgrass (L)**  
**Paul M. Snyder**  
**Mr. and Mrs. George J. Soares**  
**Mr. James E. Spain**  
**Mrs. William D. Spain**  
**Nadine Speck**  
**Christopher C. Stahl**  
**Mr. and Mrs. Harbert Stahl**  
**Starkey, Jr. (PC)**  
**Mrs. Clarence Steber (LM)**  
**Thomas J. Stehly**  
**Mr. and Mrs. Richard Stern**  
**Dr. and Mrs. Robert D. Stocklin**  
**Connie L. Stoddard (L)**  
**Adm. and Mrs. H. G. Stocklein**  
**Michael E. Sturges**  
**Albert W. Sullivan**  
**Mr. and Mrs. Tad Sullivan (L)**  
**Nancy A. Sullivan**  
**Mr. and Mrs. Robert E. Sullivan**  
**Harry L. Summers**  
**John Tannenbaum (L)**  
**Mr. and Mrs. Donald V. Tarré (PC)**  
**Mr. and Mrs. Robert B. Tasker**  
**Renee Taubman**  
**Mr. and Mrs. Robert H. Taylor (PC)**  
**Hon. and Mrs. Ross G. Tharp (L)**  
**Mr. and Mrs. Gerald E. Thomas (AS)**  
**Mr. and Mrs. Henry N. Thompson (L)**  
**Teresa Thompson (L)**  
**Mr. and Mrs. John M. Thornton**  
**Mr. and Mrs. Jack W. Thornton, Jr. (L)**  
**Constance C. Thurston (L)**  
**Mrs. Jonathan C. Tibbitts, Jr.**  
**Mr. and Mrs. Paul Tihanyi**  
**Vincent E. Timm (L)**  
**Mr. and Mrs. Peter Tivadar**  
**Bruce Tomlinson**  
**Rose Marie Tortman**  
**Mr. and Mrs. Eugene Treppe (PC)**  
**Mr. and Mrs. Wayne D. Trewhitt**  
**Larry Twomey**  
**Joseph I. Ufford**  
**Mr. and Mrs. John W. Veyron**  
**Mr. and Mrs. A. Van Norman**  
**Norman F. Vavra (L)**  
**Mr. and Mrs. Tom Ventimiglia**  
**Mr. and Mrs. George Vigito (PC)**  
**Duane Wallace**  
**Donald C. Walsh**  
**Mr. and Mrs. Kenneth A. Ward**  
**Mr. and Mrs. Lincoln R. Walts (PC)**



**Mr. and Mrs. Terry Ward**  
Mr. and Mrs. William T. Ward (PC)  
**Mr. and Mrs. Frank R. Warren (PC)**  
Mr. and Mrs. William K.  
Warren, Sr. (PC)  
Margot M. McVaine  
Washington (AS)  
**William J. Watson**  
**Mr. and Mrs. Roy Weber**  
**Louise A. Weeber (AS)**  
**Melinda L. Weiss**  
Robert E. Welch (PC)  
**Rodney Wells (AS)**  
Hton, and Mrs. Louis M.  
Welsh (L, MF)  
**Don Welsh**  
**Mr. and Mrs. Frank T. Weston (PC)**  
**Peggy H. Wheatcroft**  
Mr. and Mrs. Q. Whelan  
**Schuyler White**  
**D. D. Whitney**  
Dr. and Mrs. Howell E. Wiggins  
*Altha Coleman Williams (AS)*  
**Mr. and Mrs. Jerry W. Williams**  
**Mr. and Mrs. W. Scott**  
**Williams (L)**  
**Scott W. Williams**  
**Kent R. Wilson (L)**  
Mr. and Mrs. Danny Wilson  
Colette Wirth  
**Mr. and Mrs. Robert Wise**  
*Mr. and Mrs. Eric D. Wolf (AS)*  
Mr. and Mrs. Richard P.  
Wolman (PC)  
**John S. Wong**  
**Rosa S. Wong**  
**Mr. and Mrs. Kenneth R. Wood**  
Mr. and Mrs. Ernest E. Yahnke (PC)  
James R. Yakes, Jr.  
**William A. Yancey, M.D. (PC)**  
**W. T. Yee**  
Mr. and Mrs. Walter J. Zable (PC)  
**Fernando A. Zamudio**  
**Dr. and Mrs. Cornelius**  
**Zondag (PC)**  
**David B. Zurschmeide, M.D.**

**Faculty/Staff**

Larry Alexander (L, AD)  
Doris Y. Alspaugh (L, AD)  
Evelyn R. Anderson  
**Rick T. Barron (L)**  
Al Bores  
John D. Boyce (PC)  
Walter C. Branton (L, AD)  
Barbara J. Burke  
Thomas F. Burke  
John Chambers  
Joseph S. Cieselski (L, AD)  
*Thomas J. Cosgrove*  
Joseph Darby (L, AD)  
**Kenneth C. Davis (L, MF)**  
Jeanne DeSchoke (AS)  
*Iriss Engstrand (AS)*  
Michael Evans (L)  
Robert C. Felchner (L, AD)  
Belva Folsom (L, AD)  
C. Hugh Friedman (L, MF)  
Paul R. Gardner  
Marjo A. Gray  
Carol Hallstrom (L, AD)  
*Ronald S. Halvorson*  
**John Hazard (L)**  
**Walter W. Heiser (L)**  
Mrs. Marian Holleman (AS)  
Charles F. Holt (AS)  
Paul Horton (L, MF)  
Santa Carol Hougard  
Philip Hwang (AS)  
**Robert Infantino (AS)**  
John D. Kellcher (L, AD)  
Marica Brown Klein  
Homer Kripke (L, AD)  
*Harvey R. Levine (L, MF)*  
Patricia Lowry, Ph.D. (AS)  
Thomas Martz  
Grant Morris (L)  
Owen J. Mullen  
Janet Murphy (AS)  
Michael J. Navin (L, AD)  
Robert F. O'Neill (AS)  
*Irene S. Palmer*  
Herbert Peterfreund (L)  
**William L. Pickett**  
Theresa Player (L, AD)  
Jeanne B. Rigby (AS)  
*George P. Rigby*  
*Marc Robt (L)*  
Virginia F. Shue (L)  
Bernard H. Siegan (L, MF, PC)  
Robert Simmons (L, AD)  
David A. Tiedeman  
*Stanley W. Waldo*  
Donald T. Weckstein (L, AD)  
Richard Wharton (AD)  
Herbert Whyte  
Charles F. Wiggins (L, AD)  
Jerry Williams (L, MF)  
Eugene P. Yale (L, MF)



## Memorial Gifts

The donors listed below contributed to USD in the memory of the following people:

**Janice Banno, Joseph P. Busch, Father Benjamin Carrier, Walter Carter, Anthony Daniels, Adele Gilman, Julius Melloy, Kurt Nelson, Gary W. Shoemaker and J. P. Watson.**

Friend of USD  
Friend of USD  
Della J. Capelli  
Mr. and Mrs. Everett Chambers  
Mrs. Anthony Daniels  
Mr. and Mrs. Kenneth Culp Davis  
Arlene Downing  
William Gilman  
Edythe M. Grant  
Mary Ann Hester  
J. C. McGee, Riley Kyle  
Mr. and Mrs. A. Jackson Muecke  
Mr. and Mrs. Alan N. Nevins  
Mr. and Mrs. Gary W. Schons  
USD Auxiliary  
Mark and Barbara Zecca

## Peter Chocomas

Mr. and Mrs. Frank D. Alessio  
Joan Yvonne Chocomas  
Mr. and Mrs. Harry A. Collins  
Connecticut Mutual Life Ins. Co.  
Raymond C. Ferro Insurance Agency, Inc.  
Mr. and Mrs. Harry L. Gardner  
The Hellenic Cultural Society of San Diego  
Dr. and Mrs. Arthur C. Johnson  
John T. Mathews  
Mr. and Mrs. Lloyd McCain  
Mr. and Mrs. Francis J. Morlino  
Mr. and Mrs. Daniel F. Mulvihill  
Nielsen Construction Co.  
P. Frank Norton  
Jerry and Jeannie Ranglas  
Jack L. Skaala  
Paul M. Snyder  
Mr. and Mrs. Jack W. Thornton, Jr.

## Michael Mohr

Friend of USD  
Friend of USD  
Larry Alexander  
Mr. E. M. Amberg  
Clayton M. Anderson  
Michael M. Angello, A.P.C.  
Steve Arzuan  
Michael Barnes  
Rick T. Barron  
Stephen B. Bartol  
Mrs. and Mrs. Daniel F. Bell  
Leslie F. Bell  
Curtis K. Bledsoe  
John Royce  
James A. Burke  
Kevin Bush  
Cheryl A. Carlson  
Steven Chapman  
Kevin P. Carlson  
Shawn P. Clifford  
Michael J. Coppess  
Michael D. Corey  
James A. D'Angelo  
David Depolo  
Tony Ditty  
Thomas W. Dominick  
James R. Edwards  
Timothy G. Fielden  
David H. Forstadt  
Todd R. Gabriel  
Jeanette Gardmon  
Mr. and Mrs. Saul B. Gealer  
Bryan R. Gersted  
Elle Jack Gindi  
Richard J. Godfrey  
Mitchell C. Green  
David Greenberg  
Mr. and Mrs. Robert P. Hamilton  
Alex. A. Miller  
William J. Harris  
Walter W. Heiser  
Charles Jenkins  
Kenneth J. Engstrand and Henriksen  
Bradley H. Katz  
Jonathan D. Katz  
Dwain V. Keng  
Timothy L. Kleier  
Eric Klein  
Joseph C. La Costa  
Stuart J. Levy  
J. Genald Lipchitz  
Ray Lecl Lindquist  
Gary Litherland  
Todd M. Litman  
Robert S. Marcus  
Don Martin  
Mr. and Mrs. John McDermott  
Ulrich R. McNulty  
Kirk A. Miller  
Mr. and Mrs. Joseph B. Mohr  
David S. Morway  
Robert N. Mohr, M.D.  
C. Muller Enterprises, Ltd.  
P. C. Wundinger, II  
Mr. and Mrs. Michael J. Navin  
James F. Nelson  
Darcis Znyzyk  
Robert Oakland  
Michael A. O'Halley  
James A. O'Malley

Lyndon A. Gilbert & Peterson  
Coryn J. Peterson  
The Physics Organization, Ltd.  
Theresa J. Bauer  
San Jose Player Club, Inc.  
Keith Schuch  
Debra L. Smerdinger  
Shawn Shewry  
Randolph Smith  
Mark J. Speck  
William W. Stoddard  
Jennifer L. Taub  
Tat Aerobic Company  
Michael J. Telford  
Ronald B. Tolleson  
Richard J. Wharton  
Robert M. and Mrs. Philip C. Wing  
William J. Winston  
Michael G. Zysla

**Corporate Associates**

Founded in 1982, the USD Corporate Associates comprises business firms which contribute annual operating support. The program primarily benefits three areas at University: scholarship instruction and curricular faculty enrichment, at program enhancement.

Albiste  
Arthur Anderson & Company  
Anthony's Fish Grocers  
Bank of America NT & SA  
Brundage and Zellman (L)  
California First Bank  
Carnation Company Foundation  
Coca-Cola Bottling Company  
Certified Laboratories  
Chevron  
Chrisanics Companies Inc.  
Coastal Development Company  
San Diego  
J. W. Kellogg Development Co.  
Coldwell Banker  
The Coca-Cola Company  
Coca-Cola Bottling Company  
Coopers and Lybrand  
Cortney Press  
Cousley Chevrolet Center  
Crescent National Bank  
Crown Zellerbach  
Cubic Corporation  
D & S Sales  
Debra L. Smerdinger & Sells  
Deluxe Check Printers, Inc.  
Dunphy Construction Comp.  
Emery & Whimney  
First Federal Savings & Loan  
San Diego  
Arizona  
Thomas J. Fleming, Ltd.  
Foodmaker, Inc.  
General Dynamics, Inc.  
General Dynamics, Convair  
Division  
Great American First Savings  
Home Federal Savings & Loan  
Imperial County Chamber of Commerce  
JMED-Warner Lambert Co.  
Imperial Corporation of  
America  
International Business Machine  
IVAC Corporation  
Johnson & Higgins of California  
K&S Newsradio  
Kaiser Aluminum Corporation  
R. B. McComie, Inc.  
McKesson Corporation  
Mokulua Consultants, Inc.  
Mortgage Investment Services Co.  
JMED-Warner Lambert Co.  
NCH Corporation  
Nelson Construction Company  
Pacific Bell  
Pacific Electric  
Pacific Southwest Insurance  
Peat, Marwick, Mitchell &  
Company  
Peninsula State of San Diego  
Pier Waterhouse  
Procter & Gamble  
RCP Co., Inc.  
Sakson Printing Company  
Ranch Borden Inn(Surf &  
& Hotel)  
Ibergas, Inc.  
J. W. Robinson Company  
Rohr Industries, Inc.  
Saks Fifth Avenue  
Saks Fifth Avenue & Electric Corp.  
San Diego Travel & Savings Inc.  
Sea World Inc.  
Sears, Roebuck & Company  
Shaw-Walsh Advertising Co.  
The Signal Companies, Inc.  
Solar Turbines, Inc.  
Sony Manufacturing Company  
Standard Meat Company  
Sun Savings and Loan  
Association  
Telsco, Inc. Aeronautical  
Texaco, Inc.  
Torrer  
Torrer Enterprises, Inc.  
Torrer Co., Inc. Company  
Tucker, Sadler & Associates  
Union Bank  
Union Oil Company of California  
Winnipeg Canada and  
Associates

**Other Corporate Supporters**

The following business firms contribute to the University by support capital development, or through matching employee contribution.

Friend of USD (L)  
ADM  
Air Parking, Inc.  
Airwerk Industries, Inc.  
Alexander & Baldwin, Inc.  
American Airlines  
American Business Insurance  
American Express Foundation  
American Home Products (L)  
American Security Products  
Arcon Electric Ltd.

## Corporate Associates

Founded in 1982, the USD Corporate Associates comprises business firms which contribute annual operating support. This program primarily benefits three areas at the University: scholarships, instruction and curricula, faculty enrichment, and program enhancement.

## Memorial Gifts

The donors listed below contributed to USD in the memory of the following people:

Janice Banno, Joseph P. Busch, Father Benjamin Carrier, Walter Carter, Anthony Daniels, Adele Gilman, Julius Melloy, Kurt Nelson, Gary W. Shoemaker and J. P. Watson.

Friend of USD  
Friend of USD  
Della J. Capelli  
Mr. and Mrs. Everett Chambers  
Mrs. Anthony Daniels  
Mr. and Mrs. Kenneth Culp Davis  
Burnetta Downing  
William Gilman  
Elythe M. Grant  
Mary Ann Hester  
Mr. O'Connor Riley Kyle  
Mr. and Mrs. A. Jackson Muecke  
Mr. and Mrs. Alan N. Nevins  
Mr. and Mrs. Gary W. Skons  
USD Auxiliary  
Mark and Barbara Zecca

operating support. This program primarily benefits three areas at the University: scholarships, instruction and curricula, faculty enrichment, and program enhancement.

*Alistair  
Archibald Anderson & Company  
Anthony's Fish Grotes  
Bank of America NT & SA  
Brundage and Zellman (L)  
California First National Bank  
Carnation Company Foundation  
Caster Family Trust  
Certified Laboratories  
Chevron  
Christiana Companies Inc.  
Coca-Cola Bottling Company of  
San Diego  
J. W. Colacich Development Co.  
Goldberg Bankers  
The Collins Companies  
Coopers and Lybrand  
Copoly Press  
Corbett Chevrolet Center  
Crocker National Bank  
Crown Zellerbach  
Cubic Corporation  
D & D Sales  
Dunham Brothers & Sells*

## Peter Choconas

Mr. and Mrs. Frank D. Alessio	First Federal Savings & Loan of Arizona
Juan Yvonne Chiconas	Thomas J. Fleming, Ltd.
Mr. and Mrs. Harry A. Collins	Broomfield, Inc.
Connecticut Mutual Life Ins. Co.	<b>Fortuna Properties, Inc.</b>
Raymond C. Ferro Insurance Agency, Inc.	Fraze Industries
Mr. and Mrs. Harry L. Gardner	GTA Technologies, Inc.
The Hellenic Cultural Society of San Diego	Gannett
Dr. and Mrs. Arthur C. Johnson	General Dynamics, Convair Division
John T. Mathews	Globe American Savings & Savings Bank
Mr. and Mrs. Lloyd McClain	Great Federal First Loan
Dr. and Mrs. Frances J. Morlino	Hotel del Coronado
Mr. and Mrs. Daniel F. Mulvihill	<b>IMEL-Warner Lambert Co.</b>
Nielsen Construction Co.	<b>International Corporation of America</b>
P. Frank Norton	<i>International Business Machines</i>
Gerry and Jeannie Ranglas	IVAC Corporation
Dr. and Mrs. Robert A. Rasmussen	Knoxon & Higgins of California
Paul M. Snyder	<b>KSDO Newsradio</b>
Mr. and Mrs. Jack W. Thornton, Jr.	

## Faculty/Staff

Doris Alexander (L, AD)  
 Dr. Y. Alspough (L, AD)  
 Evelyn R. Anderson  
**Rick T. Barron**  
 Al Bares  
 John D. Boyce (PC)  
 Darrell D. Bratton (L, AD)  
 Barbara J. Burke  
 Thomas F. Burke  
 John Chambers  
 Joseph S. Ciesielski (L, AD)  
 Thomas J. Cogswell  
 Joseph Darby (L, AD)  
**Kenneth C. Davis (L, MF)**  
 Edward DeCrooks (AS)  
*Erin Engstrand (AS)*  
 Michael Evans (L)  
 Robert C. Feltnell (L, AD)  
 Ralph Folsom (L)  
 Hugh Friedman (L, MF)  
 Paul R. Gardner  
 Marjo A. Gray  
 Carol Hallstrom (L, AD)  
**Ronald S. Halstrom**  
**John Hazard (L)**  
**Walter W. Heiser (L)**  
 Mrs. Marian Holliman (AS)  
 Charles F. Holt (AS)  
 Paul Horton (L, MF)  
 Santa Carol Hougaard  
 Philip Hwang (AS)  
**Robert Infantino (AS)**  
 John D. Kelleher (L, AD)  
 Annika Kormanik (AS)  
 Mr. and Mrs. Lloyd McClain  
 Dr. and Mrs. Francis J. Merlino  
 Mr. and Mrs. Daniel F. Mulvihill  
 Nielsen Construction Co.  
 P. Frank Norton  
 Jerry K. Skalla  
 Paul M. Snyder  
 Mr. and Mrs. Jack W. Thornton, Jr.  
**Michael Mohr**  
 Friend of USD  
 Friend of USD  
 Larry Alexander  
 Eric M. Amberg  
 Clayton M. Anderson  
 Michael M. Angello, A.P.C.  
 Peter Attarian  
 Michael Barnes  
 Rick T. Barron  
 Stephen P. Bartol  
 Steven L. Beauvais  
 Leslie E. Bell  
 Curtis K. Bledsoe  
 John Boyce  
 Whitney A. Burke  
 Cheryl Bush  
 Cheryl A. Carlson  
 Steven Chapman  
 Kevin P. Cleary  
 Shawn P. Clifford  
 Michael J. Coppess  
 Michael D. Coors  
 Home Federal Savings & Loan  
 Hotel del Coronado  
 IMED-Vander Lambert Co.  
**Imperial Corporation of America**  
*International Business Machines*  
 IVAC Corporation  
 Johnson & Higgins of California  
**KSDO Newsradio**  
 May Department Stores Company  
**R. B. McComick, Inc.**  
 McKesson Corporation  
*Mokulua Consultants, Inc.*  
 National Steel and Shipbuilding Co.  
 NCH Corporation  
 Nielsen Construction Company  
 Pacific Bell  
 Pacific Scene, Inc.  
*Pacific Southwest Airlines*  
 Peat, Marwick, Mitchell & Company  
 Peninsula Bank of San Diego  
*Price Waterhouse*  
**Procter & Gamble**  
**RPC Co., Inc.**  
 Halston, Purina Company (L)  
 Rancho Bernardo Inn/Surf & Sand Hotel  
 Riberglass, Inc.  
 J. W. Robinson Company  
 Rhr Industries, Inc.  
**Saks Fifth Avenue**  
 San Diego Gas & Electric Company  
*San Diego Trust & Savings Bank*

## David Depolo

Thomas W. Dominick  
James R. Edwards  
Timothy L. Fiedler  
David H. Forstadt  
Todd R. Gabriel  
Jeanette Gordon  
Mr. and Mrs. Saul B. Gealer  
Bryan R. Gerstel  
Elie Jack Gindin  
Richard J. Godfrey  
Mitchell C. Green  
David Greenberg  
Mr. and Mrs. Robert P. Hamilton  
Alex A. Harper  
William J. Harris  
William W. Heiser  
Charles Jenkins  
Jennings, Engstrand and Henriksen  
Bradley H. Kane  
Jonathan D. Katz  
Dwan V. Kerig  
Timothy L. Kleier  
Eric Klein  
Joseph C. La Costa  
Sigmund Companies, Inc.  
Spartan Industries, Inc.  
Sony Manufacturing Company of America  
Standard Meat Company  
**Sun Savings and Loan Association**  
Teledyne-Ryan Aeronautical Systems, Inc.  
Tico  
Torrey Enterprises, Inc.  
Touche Ross & Company  
Tucker, Sadler & Associates  
Union Bank  
Union Oil Company of California  
**Wimmer, Yamada and Associates**

### Other Corporate Supporters

The following business firms contribute to the University by supporting capital development, special events, the annual giving program, or through matching employee contributions.

**Friend of USD (L)**  
ADMA Co., Inc.  
Ace Parking, Inc.  
Airwerk Industries, Inc.  
Alexander & Baldwin, Inc.  
American Broadcasting Cos.  
**American Business Company**  
**American Express Foundation**  
American Home Products (L)  
American Security Products  
Arcon Electric Ltd.

Arts Incorporated  
 Atlas Hotels  
**Norman Barken Associates, Inc.**  
*Barr & Barr, Inc.*  
 Big Bear Super Market  
**E. F. Brady Company, Inc.**  
 Brian Michael Giblin Insurance  
 The Broadway  
**Brown, Zammit, Enycart**  
 Engineering  
**Builders Concrete, Inc.**  
**Leo Burnett Company, Inc.**  
 CMS Associates  
 Cairncross Associates  
 Camillo Motors, Inc.  
 Carlson Travel Service, Inc.  
 Coast Dental Supply, Inc.  
 Collins Development  
 Companies  
**ConAm Management**  
 Corporation  
 Connecticut Mutual Life

## Gifts-in-Kind

**Friend of USD**  
Mrs. Raphael J. Brennan, Jr.  
Ralph Folsom (L)  
Charles L. Haines (L)  
Mr. and Mrs. C. Ray Hamon  
Professor and Mrs. Homer Kripke  
**Gerald T. LaFlamme**  
Honorable Byron Lindsay  
**Joseph P. Manzo (L)**  
**Mike Mcaney (L)**  
Marc Rothberg (L)  
**San Diego County Office of  
Education (L)**  
**Shenas, Shaw and Wallace (L)**  
Mr. and Mrs. Frank S. Silva  
Teresa Thompson (L)  
**West Publishing Company (L)**  
Jerry William (L)  
Walter Woodbury (L)  
Mr. and Mrs. Walter J. Zable

## ICSC

ICSC raises annual operating support for fifteen member colleges, including USD.

Adams General Corporation  
Adams Rite Manufacturing  
Adams-Webb  
Aerospac Foundation  
The Ahmanson Foundation  
Alfa Foundation  
Allergan Pharmaceuticals  
Allied Corporation  
Allied Stores Foundation, Inc.  
The Altschuld Foundation  
Alpha Beta Gamma  
American Airlines  
American Brands, Inc.  
American Broadcasting  
Ames Companies  
American-Sand Foundation  
Amerson  
Ametek Foundation  
Amstar and Amstar Co.  
The Annenberg Fund, Inc.  
The Argyns Foundation  
Arco Foundation  
Armstrong  
Armstrong World Industries, Inc.  
Guy F. Atkinson Company of  
California  
Myrtle L. Atkinson Foundation  
Atlantic Richfield Foundation  
AT&T Foundation  
Automobile Club of Southern  
California  
Automotive Services, Inc.  
Avery International, Inc.  
The B. C. Baker Foundation  
The Bank of California  
BancAmerica Corporation  
Bateman Eichler, Hill Richards, Inc.  
Beckman Instruments, Inc.  
M. W. Bekins Foundation  
Bell Building  
Bemis Company Foundation  
Beneficial Finance System  
Beneficial Standard Foundation  
Best Products Corporation  
Beverly Enterprises  
Borden, Inc. through its  
Foundation  
Brandenburg Johnson Associates  
The Bristol-Myers Fund  
M. J. Brock and Sons, Inc.  
The Brunswick Foundation  
Buckner-Eric Foundation, Inc.  
Bullock's  
Mr. Waldo H. Burnside  
Burroughs Corporation  
California Electric Foundation  
California Portland Cement  
Company  
The Capital Group, Inc.  
Carver-Hawley Lake Stores, Inc.  
CBS, Inc.  
Central Pacific Corporation  
Chevron U.S.A. Inc.  
City National Bank  
Coca-Cola Bottling Company of  
Los Angeles  
The Coca-Cola Company  
Coca-Cola International, Inc.  
Communications Technology  
Corporation  
Container Corporation of America  
Continental  
Coopers & Lybrand  
James S. Copley Foundation  
Creditrith Financial Corporation  
Crocker National Bank Foundation  
Culbitt Corporation  
Daily News Foundation  
Dart and Kraft Foundation  
John and Janet Delmonico  
Foundation  
Deloitte Haskins & Sells  
Deluxe Check Printers Foundation  
Di Giorgio Foundation  
Dineen Foundation  
Carrie Estelle Doherty Foundation  
Ducommun Incorporated  
The O. K. Earl Corporation  
Fidelity Investments, Inc.  
Ernst & Whinney  
The Essick Foundation, Inc.  
Ex-Cell O Foundation  
Fidelity Investments  
Filon Division of SOHIO  
Chemical Co.  
First Interstate Bank of California  
First National Bank  
The Flour Foundation  
Ford Motor Company Fund  
Mr. Louis W. Foster  
Mr. and Mrs. Edward N. Frank  
The General Foods Fund  
General Mills Foundation  
General Motors Foundation  
The Gerber Baby Foods Fund  
Gertty Oil Company  
Gibraltar Corporation  
The Gillette Company  
Glendale Federal  
The Robert M. Golden Foundation  
Graco Foundation  
Granger Electric Company, Inc.  
Great American First Savings Bank  
Great Western Savings  
Mr. Jay H. Greiner  
Mr. E. Gruenther Foundation  
Mr. Ernest W. Hahn  
John Hancock Mutual Life  
Insurance Company  
Handy and Harman Foundation  
The W. W. Henry Company  
Herald Examiner Beneficent Fund  
Horton Foundation  
Hollywood Park Racing  
Charities, Inc.  
Home Federal  
Home Savings of America  
Houghton Mifflin Co.  
Mr. and Mrs. Robert R. Hubbard

- Hughes Aircraft Company
- Hughes Employees Give  
Once Club
- Hughes Helicopters, Inc.
- Edward F. Hutton Foundation
- Hydriol Company
- Imperial Bank Foundation
- Imperial Corporation of America
- Industrial Indemnity Company
- International Business  
Machines Corp.
- ITT Corporation
- Mr. Eli S. Jacobs
- Japan Business Association of  
So. California
- Johnson and Higgins of California
- Earl M. Jorgensen Co.
- Carl Karcher Enterprises, Inc.
- Kerr Glass Manufacturing  
Corporation
- Kilroy Industries
- Kimberly-Clark Foundation

Korn Ferry International  
Kwiksit Division, Emhart  
Hardware Group  
LAECO Incorporated  
Lansdale & Co.  
Latham and Watkins  
Lavery's Foods, Inc.  
The Lear Siegler Foundation  
The Leisure Corporation  
Lever Brothers Company  
Levi Strauss Foundation  
Liberty Mutual Insurance  
Lifetouch  
Foundation of the Litton Industrial  
Lloyd Corporation, Ltd.  
Lloyds Bank California  
Lectec Inc.  
Lectro-Technic Corp.  
Dolly Madison Foundation  
The Magnavox Company  
Marina City Corp.  
Martin Marietta Aluminum  
May Co., California  
Mayne Nickless Incorporated  
MCA Inc.  
McCulloch Corporation  
McDonald Douglas Foundation  
The McGraw-Hill Foundation  
Mr. George W. Mefferd  
Megatec Corporation  
William M. Mercer-Meidingers  
Incorporated  
The Merck Company Foundation  
The 3M Company  
Missui Manufacturers Bank  
Foundation  
New York Life Insurance Company  
NI Industries, Inc.

Nordstrom  
 Northrop Aircraft Corporation  
 The Oak Tree Foundation  
 Occidental Petroleum Charitable  
 Foundation  
 Olga Company  
 O'Melveny and Myers  
 Pacific Bell  
 Pacific Mutual Life Insurance  
 Company  
 Pacific Title Company  
 Paramount Pictures Corporation  
 Parker Hannifin Corporation  
 The Parsons Corporation  
 The Ralph M. Parsons Foundation  
 Peter Marshall Mitchell and Co.  
 C. L. Peck Contractor  
 J. C. Penney Company, Inc.  
 Pennsylvania Life Insurance  
 Company  
 Pennzoil Company  
 Petrolene Incorporated  
 Pfaffinger Foundation  
 The Pfizer Foundation  
 Phoenix Motor Incorporated  
 Pinkerton's, Inc.  
 PPG Industries Foundation  
 Mr. Randall E. Presley  
 Pressfield Inc.  
 Price Waterhouse  
 The Proctor and Gambell Fund  
 Prudential Insurance Company  
 of America  
 Quantum Systems, Inc.  
 RCA Corporation  
 Republic Corporation  
 R. J. Reynolds Industries, Inc.  
 Resnick Inc.  
 Company—Grayson Controls  
 J. W. Robinson Company  
 Rockwell International  
 Corporation  
 Mr. Dickinson C. Ross  
 Sapa Corporation  
 Santa Anita Foundation  
 Santa Barbara Savings  
 Santa Fe Industries Foundation  
 Security First Group  
 Security Pacific Foundation  
 The Signa Corporation  
 Southern Portland Cement  
 Company  
 Square D Foundation  
 Mr. Harold B. Starkey, Jr.  
 Sterling Drug Inc.  
 J. P. Stevens & Co., Inc. Founda-  
 tion  
 Stewart Smith West, Inc.  
 Elbridge and Mary Stuart

Summa Corporation  
Sunlink Growers, Inc.  
Tandy Corporation/Radio Shack  
Mr. Walter Taylor, II  
Tele-Tech, Inc.  
TeleTrend Charitable Trust  
Tenneco Inc.  
Thorpe Insulation Company  
Thrifty Corporation  
Tiger Corporation  
The Times Mirror Foundation  
The Touché Ross Foundation  
Toyota Motor Sales, U.S.A., Inc.  
Transamerica Occidental Life Insurance Company  
Tubasales  
Union Bank Foundation  
Union Carbide Company of California Foundation  
Union Pacific Foundation  
The United States Borax & Chemical Corp.  
The UPS Foundation  
The Vinnell Foundation  
The Von der Ahe Foundation  
The W. M. W. Foundation  
Watson Industrial Properties  
The Wells Fargo Foundation  
Whittaker Corporation  
Gin Wong Associates  
Arthur Young

The Robert Golden Foundation  
Ernest W. and Jean E. Hahn  
Foundation  
The Philip Y. Hahn Foundation  
Hibben Foundation  
**Conrad N. Hilton Foundation**  
*The James Irvine Foundation*  
Irvin J. and Eleanor Kahn  
Foundation (L)  
George Henry Mayr Trust  
*NCR Foundation*  
Olin Foundation  
John M. Olin Foundation, Inc.  
The Parker Foundation (L)  
**Research Corporation**  
Riverside Community Foundation  
The Roon Foundation, Inc.  
San Diego Community  
Foundation (L)  
Scaife Family Charitable Trust (L)  
Dr. Scuss Foundation  
**Marie Stauffer Sigall**

# Board of 1983-1988

The Most Reverend  
Leo T. Maher, D.D.  
Chairman of the Board  
Bishop of the Diocese  
of San Diego

Mrs. Helen K. Copley  
Vice Chairman of the Board  
Chairman and Chief  
Executive Officer, Copley Properties

Reverend Monsignor  
I. Brent Eagen  
Secretary  
Chancellor of the Diocese  
of San Diego

Mr. J. Philip Gilligan  
Treasurer  
Owner, Gilligan Groves,  
Carlsbad

Manuel Barba, M.D.  
San Diego

Mrs. Wilson B. Baugh  
Co-Owner, Wilson Baugh  
Enterprises, San Bernardino

Mr. Arthur B. Birtcher  
General Partner, Birtcher Pa-  
corn Company, Beverly Hills

Mr. James W. Colachi  
President, J. W. Colachi  
Development Co., La Jolla

Mr. Hernandez Courtright  
Proprietor and Managing  
Director, Beverly Wilshire  
Hotel, Beverly Hills

Mr. Daniel W. Derbes  
President, Signal Advanced  
Technology Group, La Jolla

Mrs. William G. Duflock  
Partner, San Bernardo  
Rancho, San Ardo

Reverend Monsignor  
William C. Elliott  
Episcopal Vicar for  
Education,  
Diocese of San Diego

Mrs. Ernest O. Ellison  
Principal, Elmmark  
Associates, San Francisco

Anita V. Figueroa, M.D.  
La Jolla

# Administrators

Author E. Hughes, Ph.D.  
President  
Sister Sally Faraday, RSCJ, Ph.D.,  
Vice President and Provost  
John D. Boyce, B.E.E.,  
Vice President for  
Financial Affairs  
Thomas F. Burke, M.A.,  
Vice President for Student  
Affairs and Dean of Students  
William L. Pickett, Ph.D.,  
Vice President for University  
Relations  
C. Joseph Pusateri, Ph.D.,  
Dean, College of Arts  
and Sciences  
James M. Burns, D.B.A.,  
Dean, School of Business  
Administration  
Edward F. DeRoche, Ph.D.,  
Dean, School of Education  
Sheldon Krantz, LL.B.,  
Dean, School of Law  
Irene S. Palmer, Ph.D.,  
Dean, Philip Y. Hahn School  
of Nursing  
Raymond S. Brandes, Ph.D.,  
Dean, School of Graduate  
and Continuing Education  
Patricia A. Watson, Ed.D.,  
Dean, Academic Services

**Organizations**

**Friend of USD (L)**  
Alliance Française  
*Alumnus of the Sacred Heart*  
Arizona Chapter of the Sacred Heart  
County of San Diego Controller's Office (L)  
**Frnteras de las Californias**  
Victor Gruen Center (L)  
Hellenic Cultural Society of San Diego  
Lawyer Referral Service (L)  
**Spiriting Junior High School**  
Saint Catherine Labourer Club  
San Diego County Office of Education (L)  
San Diego County United Association

# trustees,

Mr. Kim Fletcher  
Chairman and Chief  
Executive Officer, Home  
Federal Savings and Loan  
Association

Mr. Charles M. Grace  
Santa Monica

Mr. Ernest W. Hahn  
Chairman of the Board,  
Ernest W. Hahn, Inc.

Mr. Bruce R. Hazard  
President, Hazard Products

Author E. Hughes, Ph.D.  
University of  
Southern California

Mr. Peter J. Hughes  
Attorney-at-Law

Edmund L. Keeny, M.D.  
President Emeritus,  
Scripps Clinic and Research  
Foundation, La Jolla

Mr. Tawfik N. Kheury  
President, Pacific Science

Mr. Eugene V. Klein  
President and General  
Partner, San Diego Chargers  
Football Club

Mr. Douglas F. Manchester  
Chairman and Chief  
Executive Officer, Torrey  
Enterprises, Inc.

Sister Anne O'Neill, RSCJ  
Provincial, United States  
Province of the  
of the Religious of the Sacred  
St. Louis

Mr. George M. Pardee, Jr.  
Chairman of the Board of  
Pardee Construction Co.

Sister Gertrude Platt, RSCJ  
Kansas City

Mr. Leland S. Prussia  
Chairman of the Board,  
BankAmerica Corporation  
San Francisco

Mr. O. Morris Sievert  
La Jolla

# tion

Warren Muller, M.A.L.S.  
Director of Undergraduate  
Admissions

Sister Annette Bourret, RSN  
Coordinator of Graduate  
Admissions

Malachi Rafferty, M.B.A.  
Director of Continuing  
Education

Herbert E. Whyte, M.A.  
Director of Financial Aid

Rev. Patrick G. Cahill, C.S.C.  
Director of Athletics

Rev. Michael McKay, S.T.D.  
Ph.D. Chaplain  
and Director of  
Campus Ministry

Marian P. Hoffman, M.L.S.  
University Librarian

Gilbert L. Brown, Jr., Ph.D.  
Special Assistant to the  
President

Timothy J. Willard, Ph.D.  
Director of Development

Elizabeth Stroube, B.A.  
Director of Development  
Scholarship Law

James T. Sotiros, B.A.  
Director of Corporate &  
Foundation Relations

Thomas A. Martz, B.S.  
Director of Alumni Relations

Sierra Club Legal Defense Fund, Inc. (L)  
Society of the Sacred Heart, The Immaculata  
*USD Friends of Music*  
USD Graduate Nursing Students Assoc.  
USD Law School Alumni Association (L)  
USD Parent's Association  
**University of California, San Diego**  
University of San Diego Auxiliary  
**West Publishing Co. (L)**  
Zeta Mu Chapter Sigma Theta Tau

Reverend Monsignor  
William D. Spain  
Pastor, St. James Church  
Solana Beach

RADM Gerald E. Thomas  
Ambassador of the United  
States to Guyana,  
Georgetown, Guyana

Mr. A. Eugene Trepte  
President, Trepte  
Construction Co., Inc.

Mr. Richard P. Wylman  
Senior Vice President,  
First Affiliated Securities  
Inc.

Mr. Walter J. Zable  
President and Chief  
Executive Officer, Cubic  
Corporation

**Trustees Emeriti**

Mr. Thomas C. Barger  
La Jolla

Reverend Monsignor  
Robert T. Callahan  
Pastor, St. Charles Borromeo  
Church

H. John Gashin, Ph.D.  
Dean, Humanities Division,  
Monica College, Santa Monica

Sister Frances Danz, RSCJ  
Director, Religious of the  
Heart at Oakwood, Mead

Mr. Arthur H. Kaplan  
President, KB Management  
Co., Hollywood

Mr. Timothy J. Parkman  
Tucson

Mr. William K. Warren  
President, W. K. Warren  
Medical Research Center  
Tulsa

Sister Virginia McMonag  
Director of Constituen  
Sara S. Finn, APR, B.A.  
Director of Public Rel

## Board of Trustees, 1983-1984

Mr. Kim Fletcher  
Chairman and Chief  
Executive Officer, Home  
Federal Savings and Loan  
Association

Mr. Charles M. Grace  
Santa Monica

Mr. Ernest W. Hahn  
Chairman of the Board,  
Ernest W. Hahn, Inc.

Mr. Bruce R. Hazard  
President, Hazard Products

Author E. Hughes, Ph.D.  
President, University  
of San Diego

Mr. Peter J. Hughes  
Attorney-at-Law

Edmund L. Keeney, M.D.  
President Emeritus,  
Scripps Clinic and Research  
Institution, La Jolla

Mr. Timothy N. Khoury  
President, Pacific Science,

Mr. Eugene V. Klein  
President and General  
Partner, San Diego Charge  
Football Club

Mr. Douglas F. Manchester  
Chairman and Chief  
Executive Officer, Torrey  
Enterprises, Inc.

Sister Anne O'Neil, RSCJ  
Provincial, United States  
Province of  
the Religious of the Sacred  
St. Louis

Mr. George M. Pardee, Jr.  
Chairman of the Board E.A.  
Pardee Construction Co.

Sister Gertrude Pardo, RSCJ  
Kansas City

Mr. Leland S. Prussia  
Chairman of the Board,  
BankAmerica Corporation  
San Francisco

Mr. O. Morris Sievert  
La Jolla

## Administration

Author E. Hughes, Ph.D.  
President  
Sister Sally Furay, RSCJ, Ph.D.,  
Vice President and Provost  
John D. Boyce, B.E.E.  
Vice President for  
Financial Affairs  
Thomas E. Burke, M.A.  
Vice President for Student  
Affairs and Dean of Students  
William L. Pickett, Ph.D.  
Vice President for University  
Relations  
C. Joseph Pusateri, Ph.D.  
Dean, College of Arts  
and Sciences  
James M. Burris, D.B.A.  
Dean, School of Business  
Administration  
Edward F. DeRoche, Ph.D.  
Dean, School of Education  
Sheldon Krantz, L.L.B.  
Dean, School of Law  
Irene S. Palmer, Ph.D.  
Dean, Philip Y. Hahn School  
of Nursing  
Raymond J. Brandes, Ph.D.  
Dean, School of Graduate  
and Continuing Education  
Patricia A. Watson, Ed.D.  
Dean, Academic Services

Warren Muller, M.A.S.  
Director of Undergraduate  
Admissions

Sister Annemette Bourret, R.S.  
Coordinator of Graduate  
Admissions

Malachi Rafferty, M.B.A.  
Director of Continuing  
Education

Herbert E. Whyte, M.A.  
Director of Financial Aid

Rev. Patrick G. Cahill, C.S.  
Director of Athletics

Rev. Michael McKay, S.T.D.  
Ph.D. Chaplain

Clayton and Director of  
Campus Ministry

Marian P. Holloman, M.L.S.  
University Librarian

Gilbert L. Brown, Jr., Ph.D.  
Special Assistant to the  
President

Timothy J. Willard, Ph.D.  
Director of Development

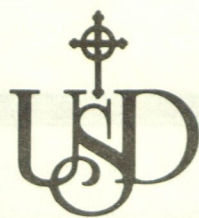
Elizabeth Stroube, B.A.  
Director of Development  
School of Law

James T. Sutros, B.A.  
Director of Corporate &  
Foundation Relations

Thomas A. Martz, B.S.  
Director of Alumni Relations

Sister Virginia Novak  
Director of Constituent  
Sara S. Finn, APR, B.A.  
Director of Public Relations





University of San Diego

# update

Winter 1985  
Vol. 6, No. 2

## A dream comes true

"A decade ago we dreamed of having our law, business, nursing and education schools all in their own buildings. Today that dream comes true."

President Hughes at the  
dedication of Harmon Hall

A new home for the School of Education — Harmon Hall — was dedicated on November 30, ending a 10-month period in which four new buildings were dedicated on campus.

The others include Olin Hall for the School of Business Administration, the Helen K. and James S. Copley Library, and the Douglas F. Manchester Executive Conference Center. The buildings represent more than \$11 million in construction.

"A decade ago we dreamed of having our law, business, nursing and education schools all in their own buildings," said President Author E. Hughes at the Harmon ceremonies. "Today that dream comes true."

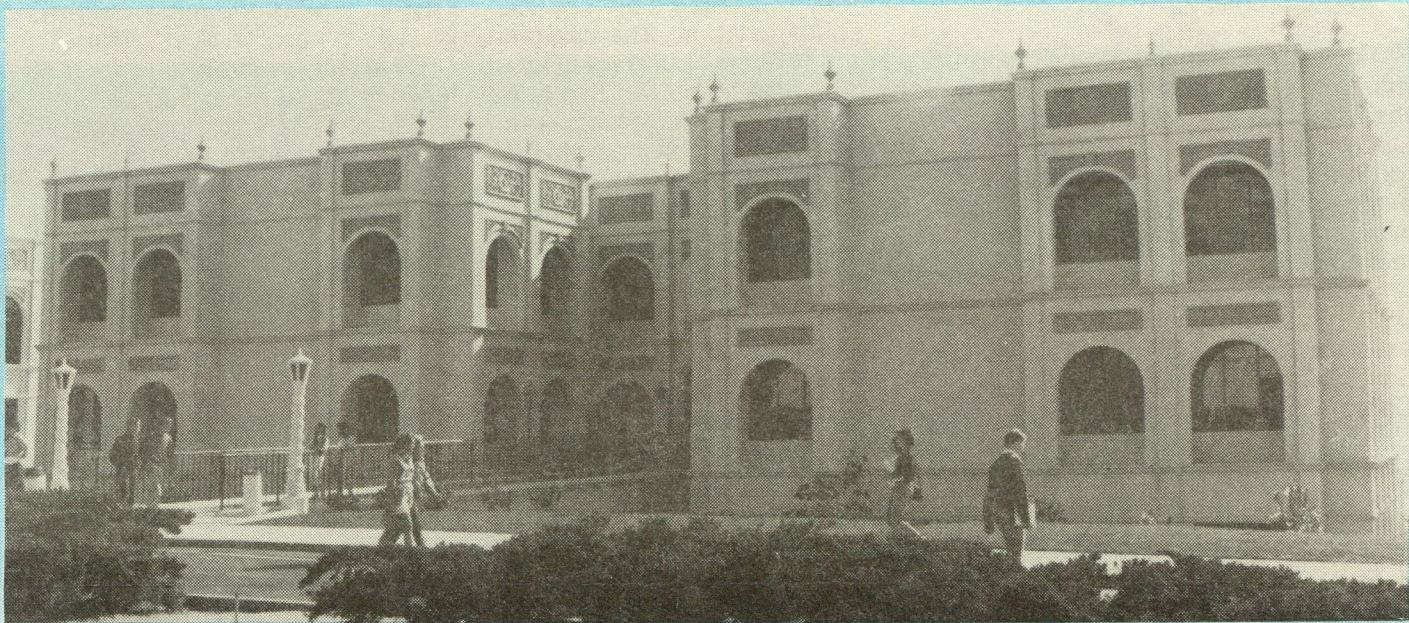
Harmon Hall was created by renovating the facility which formerly housed the School of Business Administration, located at the eastern end of campus. The building's renovations were financed by Ray and Lu Harmon of Rancho Santa Fe, Calif., in whose honor the building was named. The Harmons gave the University \$500,000 for the project in 1983.

"We are honored to be associated with this outstanding university and thrilled that we could play a part in helping USD provide a new home for the School of Education," commented Lu Harmon during the ceremonies. "We truly feel that this university is a special place — a place where a values-based education and a caring attitude create an atmosphere you don't find in very many places today."

Harmon Hall contains four classrooms, a seminar room, 22 faculty offices, a curriculum resource center, student lounge, dean's office and administrative center.

In his formal comments, Dr. Hughes noted the importance of good teachers to the learning process and said that Harmon Hall will help USD in its teacher training. "The teachers we train are the teachers of tomorrow's leaders — the people who will govern us, care for us, and educate us. Anything we can do to help those who teach become better teachers means a richer and more humane world for all of us," he said.

Dr. Edward DeRoche, dean of the School of Education, said Harmon Hall not only provides the school with the space requirements needed to enhance its programs, but also will help create a community atmosphere between professors and students.



Olin Hall

Keynote speaker Dr. Kenneth Blanchard, co-author of the best-seller *The One Minute Manager*, said he hoped the university would continue to uphold the human values he believes in, which stress finding the good in people rather than criticizing them.

Schools would be more effective if they concentrated on praising students when they do right instead of punishing them when they do wrong, Dr. Blanchard said. He compared the situation to a young child learning to talk. The constant praise of the parents motivates the child to speak better and learn more words, he explained.

The Most Rev. Leo T. Maher, bishop of the diocese of San Diego and chairman of the USD board of trustees, blessed Harmon Hall. Trustee James Colachis, chairman of the trustees building and grounds committee, presented the key to the building to the bishop.

The Harmons' two daughters, Heidi and Heather, who is a USD graduate, cut the ribbon to officially open the building. Nearly 400 guests then toured the facility.

\*\*\*\*\*

October 19 was a day of celebration on campus as the University dedicated Olin Hall, new home for the School of Business Administration.

The three-story, 46,000-square-foot facility located at the west end of campus provides the business school with a building that contains equipment and facilities on the leading edge of business education. Funded by a \$4.5 million grant from the Olin Foundation, Inc. of New York, the building houses 18 classrooms,

six seminar rooms, 48 offices, computer and observation laboratories, and student and faculty lounges.

In his prepared remarks at the dedication, Olin Foundation President Lawrence W. Milas said "Olin Hall is the story of pluralism at work in America. It is the story of persons of different faiths from different regions of the country joining together to build a business school at this University because we believe it will be for our common good."

Milas noted the Olin Foundation has awarded grants for nearly 50 buildings at colleges and universities across the country but that Olin Hall was the first business school building supported by the foundation. "The record of the University over the last 10 years is exemplary and demonstrates not only a commitment to excellence in education but also a commitment to the moral and spiritual development of its graduates. It is particularly the latter that made this University an especially attractive candidate to receive this foundation's first grant for a business school building," he explained.

Thanking the foundation for its support, USD President Author E. Hughes said "Generations to come will benefit from the far-sighted commitment to free enterprise and independent higher education made by the Olin Foundation." He said Olin Hall will strengthen the learning environment of USD business students.

Dr. James Burns, dean of the School of Business Administration, pointed out that a tripling of business school enrollment to more than 1,500 students in the past five years made the new

building a necessity. "Now we intend to change direction," he said. "The development in the future will be primarily in quality, not quantity."

Earlier in the afternoon, keynote speaker Edward P. Lenahan, publisher of *Fortune* magazine, told his audience that business is concerned with the social welfare of people as well as a profit. "I encourage you to be for good works on the part of your business," he said. "But first you have to make a profit."

Lenahan said he also hoped a few myths about business would be destroyed within Olin Hall. Myths he mentioned were "business is a rat race," "big business is bad," and "corporations, especially successful ones, are by nature corrupt."

Also participating in the dedication were the Most Rev. Leo T. Maher, bishop of the San Diego diocese and chairman of the USD board of trustees; James Colachis, board of trustee member and chair of the board's building and grounds committee; Father Michael McKay and Owen Mullen of Campus Ministry, the USD Chorus, the USD NROTC unit and the First Marine Division Band.

**ON THE COVER:** (Top) Ray and Lu Harmon, USD President Author E. Hughes and Board of Trustees Chairman Bishop Leo T. Maher share a quiet moment before the dedication of Harmon Hall. (Bottom) Lawrence Milas, president of the Olin Foundation, cuts the ribbon to open Olin Hall as Dr. Hughes and Bishop Maher watch.